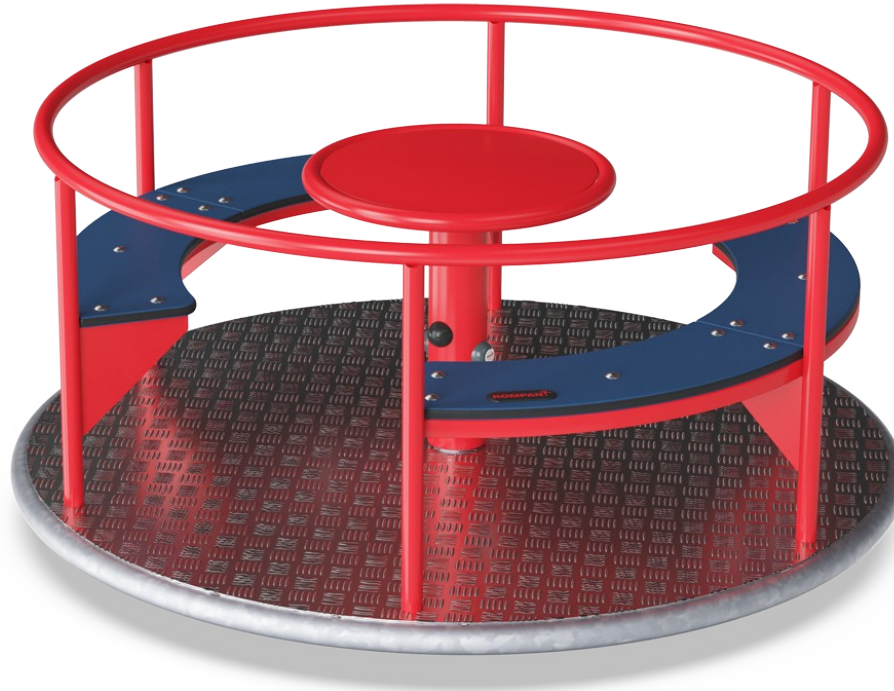


Carousel with Bench

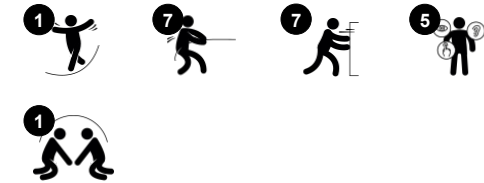
KPL114



Item no. KPL114-0901

General Product Information

Dimensions LxWxH 155x155x71 cm
Age group 2+
Play capacity (users) 8
Colour options



The red, spinning carousel attracts children and adults alike. With its turn table and two benches it radiates social spinning play, and children cannot get enough of that. The spinning can be started by pushing or pulling the carousel into motion from the outside. Or, when seated, users can use the table as a stable base to turn the carousel from. The

rounded shape makes room for users both seated and standing. Spinning on the carousel trains the vestibular system and the whole sense of balance. This is fundamental for the child's ability to move around the world safely. It's fundamental for walking, running and even being able to sit still and concentrate. When the sense of balance is under-developed, children

can focus on nothing but keeping equilibrium, seated or standing. So the fun of the thrill by spinning serves a true purpose.

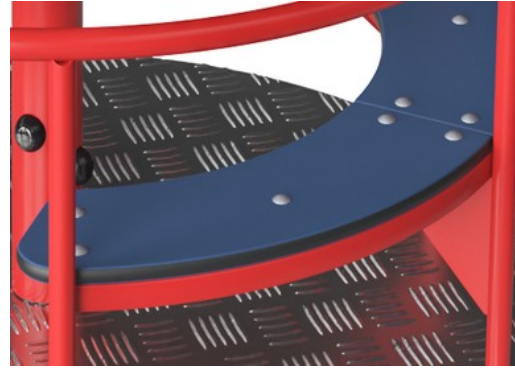


Carousel with Bench

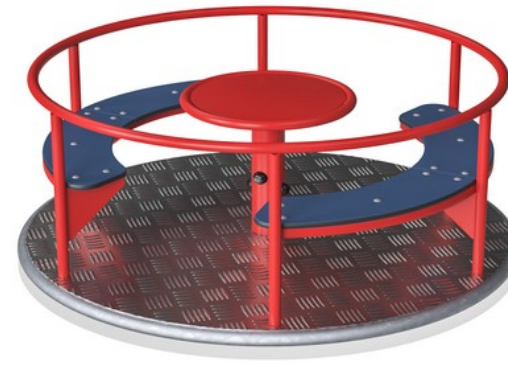
KPL114



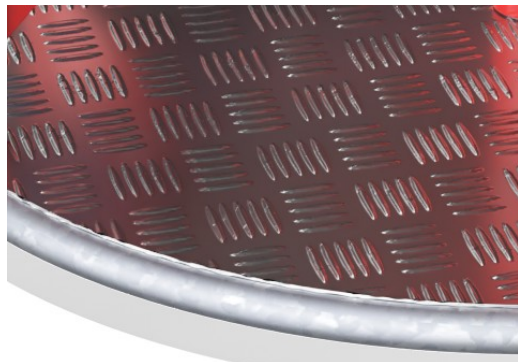
The steel surfaces are hot dip galvanised inside and outside with lead free zinc and with powder coated top-finish. The galvanisation has excellent corrosion resistance in outside environments and requires low maintenance.



Seats are made of 19mm EcoCore™. EcoCore™ is a highly durable, eco-friendly material, which is not only recyclable after use, but also consists of a core produced from 100% recycled material.



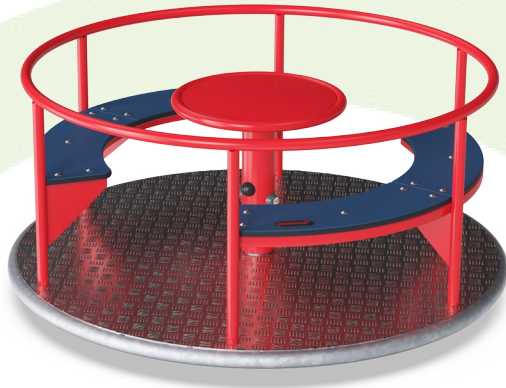
Heavy duty engineered bearing system with two single row deep groove high quality ball bearings with rubber seals. The fully closed bearing construction is lifetime lubricated and located above ground.



Deck plate of 3mm thick high-quality aluminium with 2mm texture pattern. This aluminium plate ensures safe play for all users and requires low maintenance.

Item no. KPL114-0901	
Installation Information	
Max. fall height	100 cm
Safety surfacing area	24.2 m ²
Number of installers	2
Total installation time	4.0
Excavation volume	0.56 m ³
Concrete volume	0.50 m ³
Footing depth (standard)	100 cm
Shipment weight	193 kg
Anchoring options	In-ground ✓
Warranty Information	
Hot dip galvanised steel	Lifetime
Aluminium deck	15 years
HPL decks	15 years
Bearing construction	5 years
Spare parts guaranteed	10 years





Cradle to Gate A1-A3	Total CO ₂ emission	CO ₂ e/kg	Recycled materials
	kg CO ₂ e	kg CO ₂ e/kg	%
KPL114-0901	528.90	3.21	47.10

The overall framework applied for these factors is the Environmental Product Declaration (EPD), which quantifies "environmental information on the life cycle of a product and enable comparisons between products fulfilling the same function" (ISO, 2006). This follows the structure and applies a Life-Cycle Assessment approach to the entire Product stage from raw material through manufacturing (A1-A3))

Kompan A/S
 C.F. Tietgens Boulevard 32C
 DK-5220 Odense SØ
 Denmark



Validation of CO₂ calculation of: Freestanding play equipment



Data version no. 2021-09-27

The CO₂ calculation and data are in compliance with the principles of a carbon footprint impact according to the GHG protocol (Greenhouse Gas Protocol), Scope 3, cradle to gate related to all individual components in the product category: "Freestanding play equipment" represented by item no.: GXY916012-3417.

(Scope 3 emissions include emission sources in the upstream and downstream value chain).

Date: 15. October 2021 | Valid until: 15. October 2023

Validated by:

Bente Hviid, Senior Consultant

Peter Bendtsen, Senior Consultant

Validation based on report: Validation of CO₂ calculation of 8 categories of Kompan product line, version 1.0, prepared by: Bureau Veritas HSE, Denmark: Bente Hviid and Peter Bendtsen.

Publication date: 15. October 2021

By Bureau Veritas HSE
 www.bureauveritas.dk
 +45 7731 1000

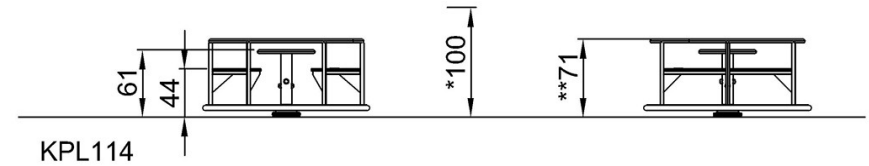
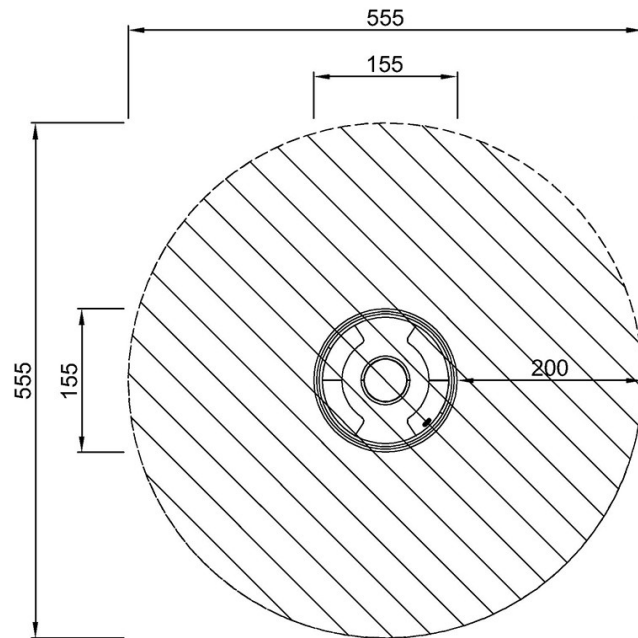


Carousel with Bench

KPL114

* Max fall height | ** Total height | *** Safety surfacing area

* Max fall height | ** Total height



KPL114
*100cm
**71cm
***24.2m²

[Click to see TOP VIEW](#)

[Click to see SIDE VIEW](#)