

NRO2009

# Double tower with spider net and bridge ADA



The voluminous Double Tower with Spider Net is an irresistible play attraction for children. With its varied play corners and diverse physical play activities it attracts children again and again, for a long time. The spider web net trains the children's cross-coordination, balance and spatial awareness with its inclined net rungs. All these motor skills are crucial when e.g. managing traffic safely. The balance beam and fireman's pole both appeal to dare-devils with their stomach-tickling height and speed. These play events train the balance and sense of space. Furthermore, the fireman's pole activity, jumping down, train children's bone density. This is particularly important as children grow muscle mass for life primarily in the early years. The accessible stairway leads users with a range of abilities up to the slide. Going down, users are lopped back to the stair entrance, which is also a meeting place.

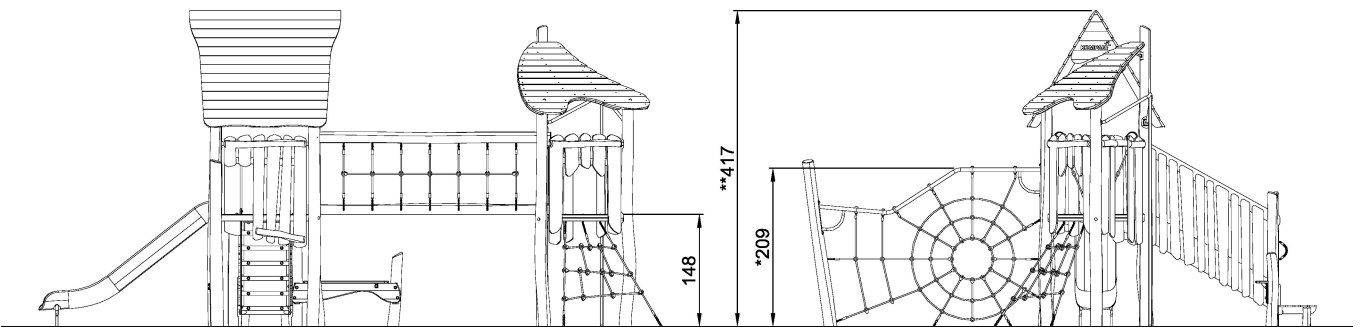
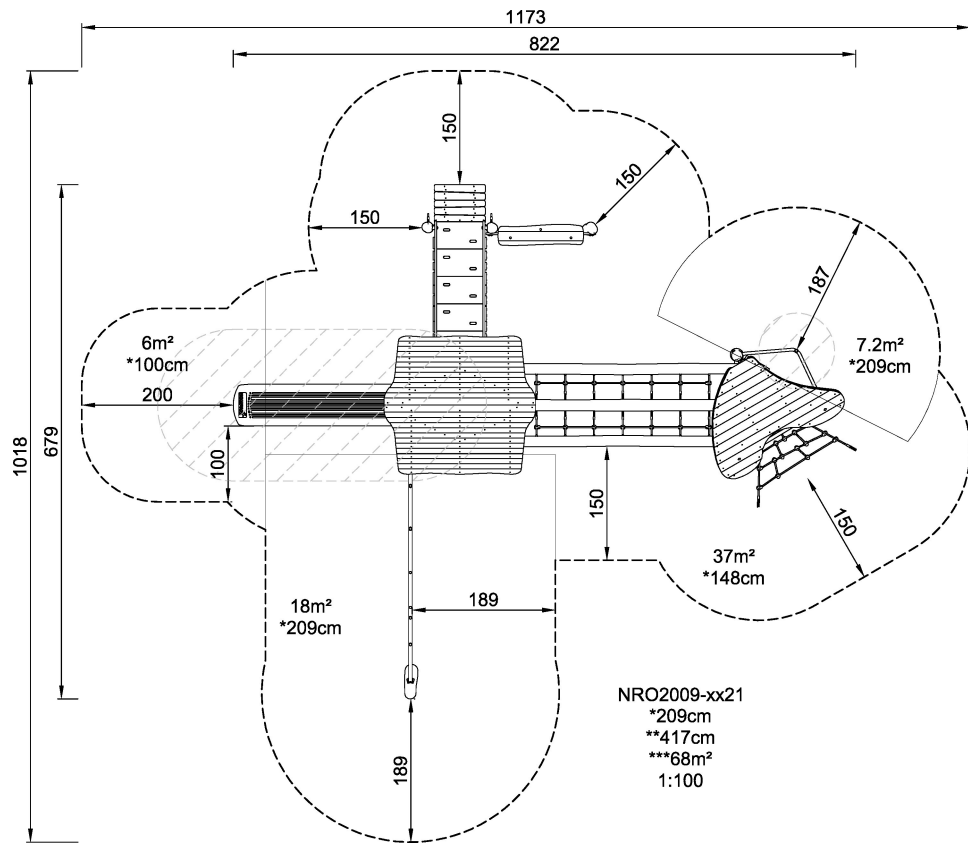
<b>Product Line</b>	Organic Robinia
<b>Category</b>	Multi play structures
<b>Age group</b>	4 - 10
<b>Max. fall height (CM)</b>	209
<b>Total height (CM)</b>	417
<b>Safety Zone</b>	68 m2



IN-  
GROU.



ASTM



NRO2009  
1:100

\* = Highest designated play surface.  
\*\* = Total height of product.

<b>Weight/heaviest parts</b>	kg.	<b>Installation (Manpower)</b>	Persons
<b>Concrete required</b>	NaN m3	<b>Installation (Hours)</b>	Hours
<b>Foundation amount/footing</b>	NaN	<b>Excavation</b>	NaN m3