




# FLEX WHEEL

FSW226



The Flex Wheel is simple to use and requires little experience beforehand. The turning movement has a mild resistance suitable for users at all levels. The ergonomically designed handles allow for natural wrist position and gives the user the opportunity to do exercises from multiple positions. The wheel will train shoulder and upper body mobility. For really

challenging exercises it can be used standing on one foot using one hand – either front facing or sideways.

Item no. FSW22600-0902	
<b>General Product Information</b>	
Dimensions LxWxH	80 x 33 x 165 cm
Age Group	13+
Capacity	1 adult
Colour Options	  



# FLEX WHEEL

FSW226



The ø800x19mm wheel is made from HDPE EcoCore™ plate. EcoCore™ is a highly durable, ecofriendly material, which is not only recyclable after use, but also consists of a core produced from 100% recycled material. The core has a thickness of 15mm and is representing 80% of the total material.



The bearing house is made from hot dip galvanized steel. The bearing shaft is made from stainless steel AISI304. The bearing itself is made from Polyoxymethylene (POM), an engineering thermoplastic with a high stiffness, low friction, and excellent dimensional stability.



The ball grips are ø80mm and are made from black, vacuum formed polycarbonate (PC). Polycarbonate is extremely strong and can withstand a very high impact.



Post are made of Ø101.6 x 2mm, pre-galvanized carbon steel and powder coated, a great protection to all conditions



The information sign is made of a PA6 (Polyamide) and shows the most relevant exercise and a QR code. When scanned the QR code will link to an animated illustration of the exercise and offers the possibility of downloading the KOMPAN sport & fitness App, which will provide a large amount of exercises and workouts.



All KOMPAN fitness products are designed according to the ASTM F3101 & EN16630 Outdoor Fitness Standards. Load tests are performed as a static test by adding dynamic factors as well as safety factors to the specified load of 78 kg per user. A product intended for 1 user is loaded with 420kg.

Item no. FSW22600-0902	
Installation Information	
Max. fall height	-
Safety surfacing area	10.1 m <sup>2</sup>
Numbers of Installers (persons)	2
Total installation time	3
Excavation volume	0.03 m <sup>3</sup>
Concrete volume	0.01 m <sup>3</sup>
Footing Depth (Standard)	90 cm
Shipment Weight	39 kg
Anchoring options	In-ground ✓ Surface ✓
Warranty information	
Panels	Lifetime
Post	10 Years
Bearings	5 Years
Galvanised structural parts	Lifetime
Spare parts guaranteed	10 Years

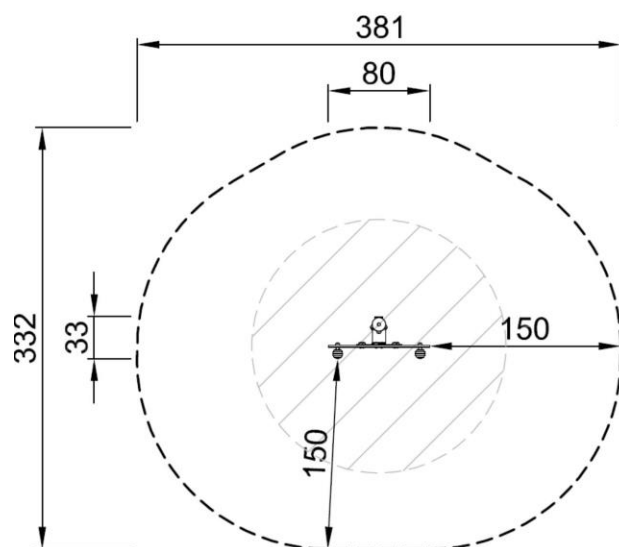


# FLEX WHEEL

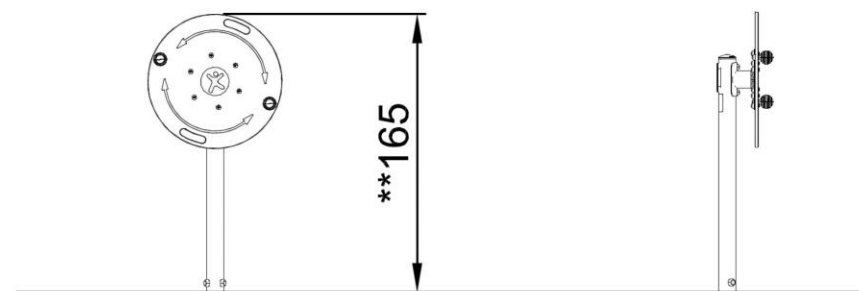
FSW226

Max fall height | Total height | Safety surfacing area

Max fall height | Total height



FSW22600  
\*\*165cm  
\*\*\*10.1m<sup>2</sup>  
1:100



FSW22600  
1:100

[Click to see 1:100 ratio TOP VIEW](#)

[Click to see 1:100 ratio SIDE VIEW](#)