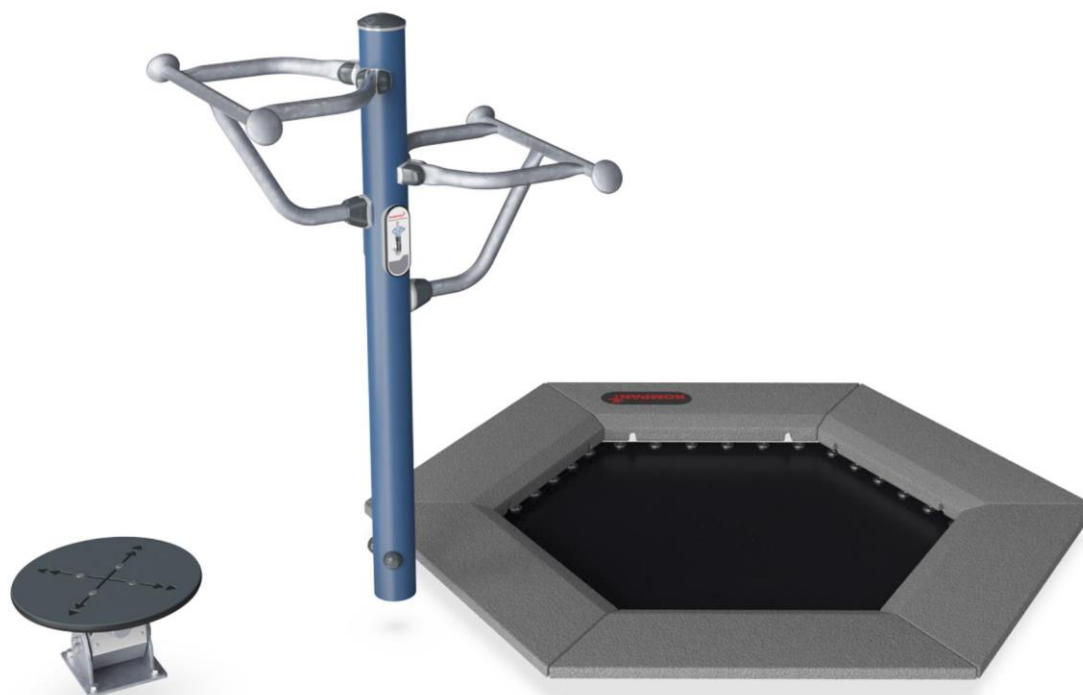


Fitness Jumper Wobble

FSW234

KOMPAN
Let's play



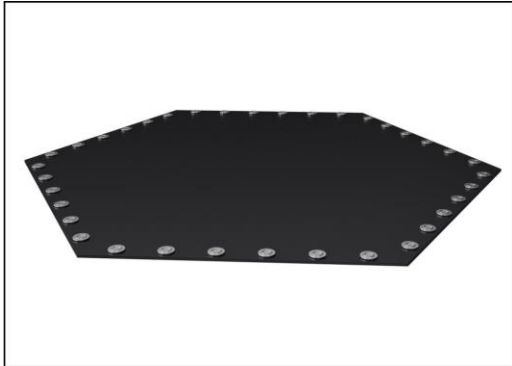
Item no.	
General Product Information	
Dimensions LxWxH	192x272x140 cm
Age group	13+
Capacity (users)	2
Colour options	

The fitness jumper is designed to be fun, fun, fun - and of course effective for everybody. When exercising on a KOMPAN Fitness Jumper, you get an intense cardiovascular workout, you train your balance and improve your bone density. The Fitness Jumper challenges both the experienced fitness jumper athlete and the average fitness enthusiast.

The handlebars offer support for beginners and adds the possibility to do high intensity power rounds with extra high jumps. By sharing the same post with the Wobble we have created a workout station which is great for improving ankle and knee stability.

Fitness Jumper Wobble

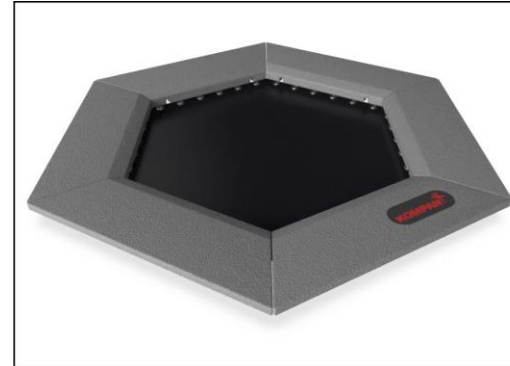
FSW234



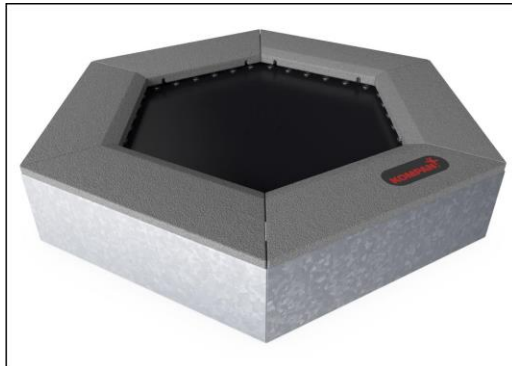
The jumping membranes are made of 6,0mm thick EP Ethylene-Propylene conveyor belt with polyester polyamide fabric carcass. Spring fixations are reinforced with steel bushings and washers on both sides. The membrane is ozone resistant and equipped with 5 center placed water drain holes.



All 36 springs are made of stainless steel to ensure durability and excellent corrosion resistance. The steel wire is 3,2 mm thick and the last five windings are cone shaped to ensure long lifetime of the jumper.



The tiles are molded in grey granulated recycled rubber (SBR/NR), and the KOMPAN logo is made of EPDM Ethylene Propylene Diene Monomer. Inside each of the rubber tiles there is a 3 mm hot dip galvanized steel plate.



All steel components are manufactured from carbon steel S235 in a thickness of 3 mm. Side panels, support walls for top frame, plates bended with SBR and plates flat for in-situ surfacing are hot dip galvanized.



As a unique feature the SBR tiles can be removed for cleaning and service. By loosening six screws the SBR tile can be lifted up to open and gain access to the springs (see instruction on KOMPAN Master).



The double ROSTA element is made of casted iron and hot dip galvanized before painted. This ensures that the ROSTA element is a maintenance free, elastic joint which can move in a range of motion of 250 in any direction. Both wobblers have a different stiffness, difference is 45%.

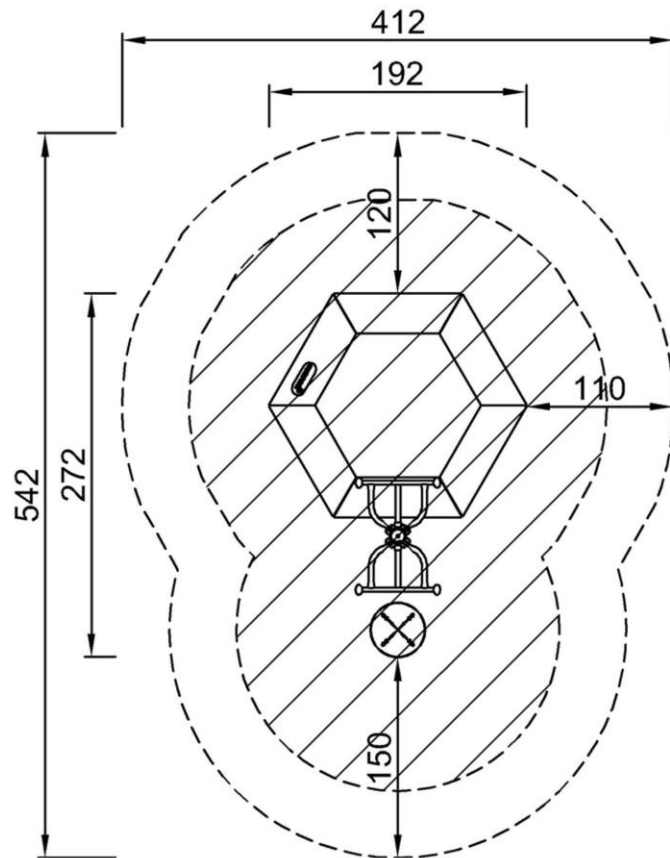
Item no.	
Installation Information	
Max. fall height	100 cm
Safety surfacing area	17,5 m ²
Numbers of installers	2
Total installation time	
Excavation volume	
Concrete volume	
Footing depth (standard)	
Shipment weight	
Anchoring options	
Warranty Information	
Jumper springs	2 years
Jumping bed material	2 years
Post	10 years
ROSTA element	2 years
Spare parts guaranteed	10 years

Fitness Jumper Wobble

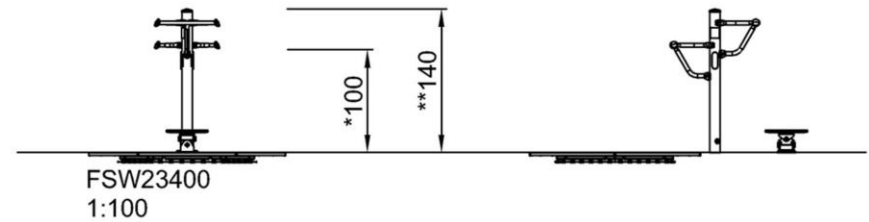
FSW234

* Max fall height | ** Total height | *** Safety surfacing area

* Max fall height | ** Total height



FSW23400
*100cm
**140cm
***17.5m²



[Click to see 1:100 ratio TOP VIEW](#)

[Click to see 1:100 ratio SIDE VIEW](#)