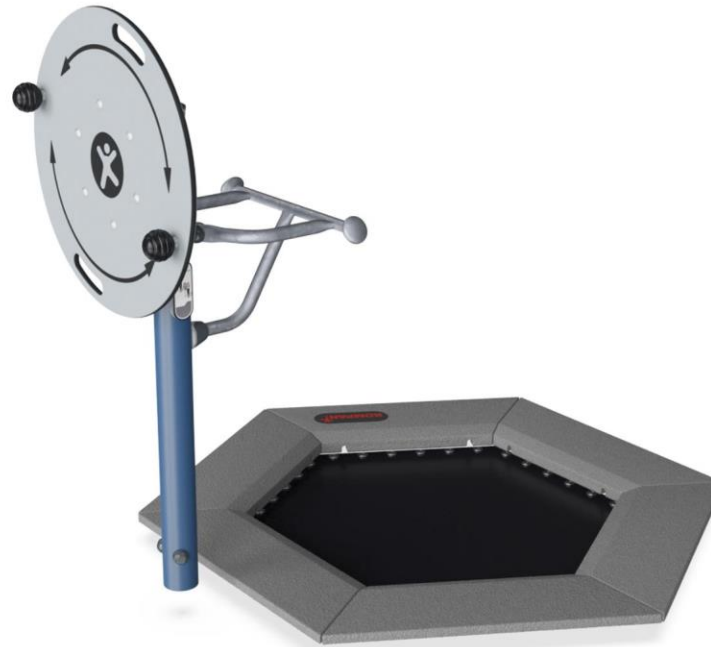


Fitness Jumper Flex

FSW235



Item no.	
General Product Information	
Dimensions LxWxH	192x208x140 cm
Age group	13+
Capacity (users)	2
Colour options	



The Flex Wheel is simple to use and requires little experience beforehand. The turning movement has a mild resistance suitable for users at all levels. The ergonomically designed handles allow for natural wrist position and gives the user the opportunity to do exercises from multiple positions. The wheel will train shoulder and upper body mobility. For really

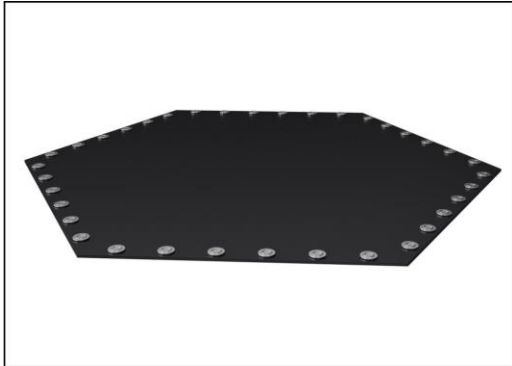
challenging exercises it can be used standing on one foot using one hand – either front facing or sideways.

Exercising on a KOMPAN Fitness Jumper gives an intense cardiovascular workout, you train your balance and improve your bone density. The Fitness Jumper challenges both the

experienced fitness jumper athlete and the average fitness enthusiast.

Fitness Jumper Flex

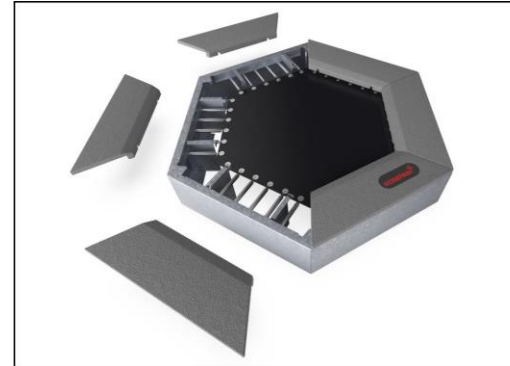
FSW235



The jumping membranes are made of 6,0mm thick EP Ethylene-Propylene conveyor belt with polyester polyamide fabric carcass. Spring fixations are reinforced with steel bushings and washers on both sides. The membrane is ozone resistant and equipped with 5 center placed water drain holes.



All 36 springs are made of stainless steel to ensure durability and excellent corrosion resistance. The steel wire is 3,2 mm thick and the last five windings are cone shaped to ensure long lifetime of the jumper.



As a unique feature the SBR tiles can be removed for cleaning and service. By loosening six screws the SBR tile can be lifted up to open and gain access to the springs (see instruction on KOMPAN Master).



The ball grips are ø80mm and are made from black, vacuum formed polycarbonate (PC). Polycarbonate is extremely strong and can withstand a very high impact.



The bearing house is made from hot dip galvanised steel. The bearing shaft is made from stainless steel AISI304. The bearing itself is made from Polyoxymethylene (POM), an engineering thermoplastic with a high stiffness, low friction, and excellent dimensional stability.



The ø800x19mm wheel is made from HDPE EcoCore[®] plate. EcoCore[™] is a highly durable, ecofriendly material, which is not only recyclable after use, but also consists of a core produced from 100% recycled material. The core has a thickness of 15mm and is representing 80% of the total material.

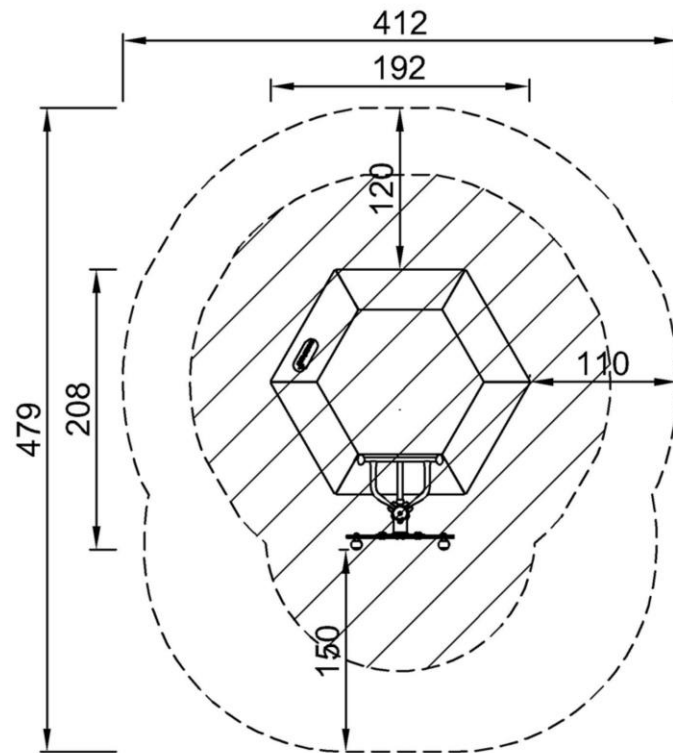
Item no.	
Installation Information	
Max. fall height	100 cm
Safety surfacing area	16,3 m ²
Number of installers	2
Total installation time	
Excavation volume	
Concrete volume	
Footing depth (standard)	
Shipment weight	
Anchoring options	
Warranty Information	
Jumper springs	2 years
Jumping bed material	2 years
EcoCore HDPE	Lifetime
Hot dip galvanised steel	Lifetime
Spare parts guaranteed	10 years

Fitness Jumper Flex

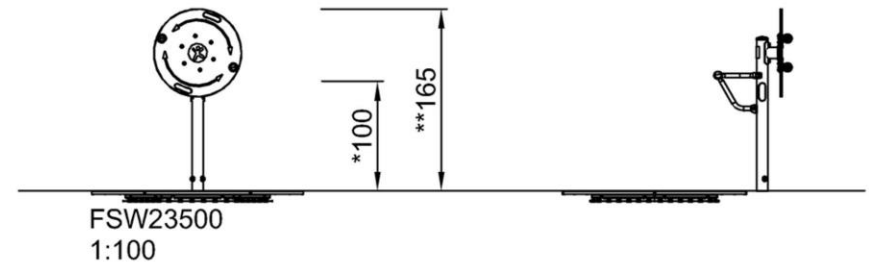
FSW235

* Max fall height | ** Total height | *** Safety surfacing area

* Max fall height | ** Total height



FSW23500
*100cm
**140cm
***16.3m²



FSW23500
1:100

[Click to see 1:100 ratio TOP VIEW](#)

[Click to see 1:100 ratio SIDE VIEW](#)