

TOPICCO WD1542



1 - 8 years



54 kids



81,1 m²



Material specification

- Construction made of the highest quality laminated, impregnated and double coated pine wood 90 x 90 mm without knots, secured from the top with polypropylene plugs,
- Metal anchors made of hot dip galvanized steel, protecting the wood from direct contact with the ground to prevent rot and to extend the product's life,
- Platforms made of durable anti-slip and waterproof plywood or HPL plate,
- Side panels made of durable HDPE plate, resistant to weather conditions
- Transparent polycarbonate panels with a permanent print resistant to scratches and weather conditions
- Slides made of stainless steel with durable HDPE side panels,
- Tube slide made of LLDPE, highly resistant to weather conditions and UV rays,
- Educational panels and moving elements made of HDPE plate, resistant to weather conditions,
- Drawing board made of durable, waterproof plywood or HPL plate, resistant to weather conditions,
- Maze windows made of polycarbonate, balls made of synthetic material,
- Spherical windows made of polycarbonate,
- Steel ropes in polypropylene braid, connected with durable plastic elements, stainless steel or aluminum,
- Stainless steel bars,
- Screws covered with plastic caps and/or stainless steel screws,



Facilitating disability



sound stimulation



easy access



shelters



integration



Intellectual development



manipulation



music



thinking



Physical development



hiding



sliding



observation



community



roofs





2
number of slides



1
number of roofs



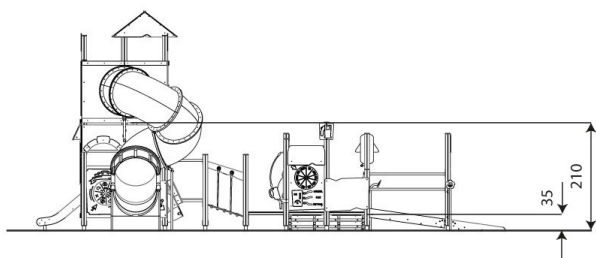
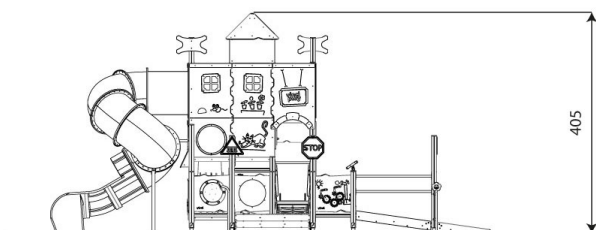
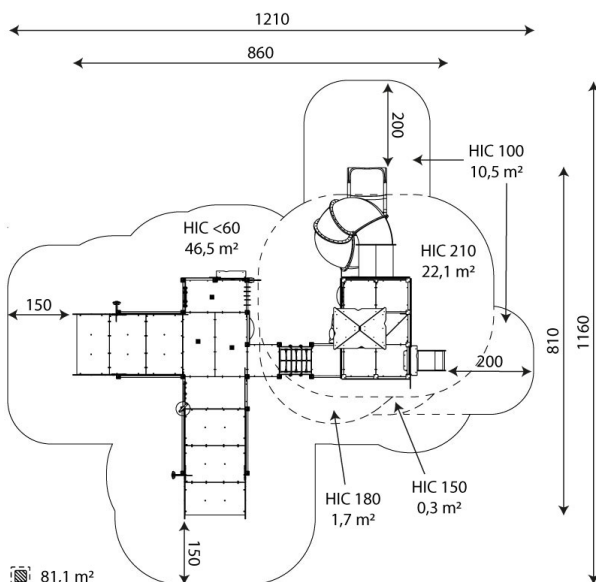
19
number of interactive elements



2
number of activity elements



stairs



Product technical sheet

TOPICCO WD1542

Product data

Length	860 cm
Width	810 cm
Total height	405 cm
Age group	1 - 8 years
Number of users	54 kids
Safety zone	81,1 m ²
Free fall height	210 cm
The height of the platforms	35, 59, 60, 90, 120, 150, 180, 210 cm
tube slide platform height	210 cm
slide platform height	59 cm
In accordance with norm EN	1176-1:2017
Weight of the heaviest part	95 kg
Dimensions of the largest part	357x9x9 cm
Availability of spare parts	YES
Installation time	9,5 h

Data is subject to change without prior notice.

Additional information

- equipment adapted for the disabled; intended for public playgrounds;
- equipment has a certificate issued by an accredited entity or a declaration of conformity;
- no sharp edges or chinks that would pose a danger of jimmie the head, fingers or any other body parts;
- anchoring on flat surface, 80/70/60 cm deep;
- slide should not be installed southwards;
- render is for reference only, the actual appearance of the equipment and its color may vary;

Guarantee

30 30 year guarantee - Structural strength of steel and stainless steel components

15 15 year guarantee - Structural failure of steel and stainless steel, for dynamic equipment

10 10 year guarantee - Structural failure of high density polyethylene and high pressure laminates components

5 5 year guarantee - Corrosion of stainless steel and hot dip galvanized and powder coated components; against bark beetles and rot in case of wooden structural elements

Detailed information in the guarantee card

Vinci Group Sp. z o.o.
Seminaryjna 9 Street
99-400 Łowicz

VAT: 534-250-14-46
PHONE: +48 42 203 24 99 ext. 26
M: +48 793 404 991



biuro@vinci-play.com
info@vinci-play.com
www.vinci-play.com

Surfaces according to EN 1176-1:2017

	Description (mm)	Layer thickness (cm)	Maximum fall heights (cm)
Turf/ top layer of soil (A,B,C)	-	-	≤100
bark (A,C)	Particle size from 20 to 80	30	≤200
		40	≤300
woodchips (A,C)	Particle size from 5 to 30	30	≤200
		40	≤300
sand or gravel (A,C)	Particle size from 0,25 to 8	30	≤200
		40	≤300
synthetic attested (A,B,C)	Tested according to EN 1177		210

Amount of safe surface corresponding with free fall height:

HIC <60	46,5 m ²
HIC 100	10,5 m ²
HIC 150	0,3 m ²
HIC 180	1,7 m ²
HIC 210	22,1 m ²

Data is subject to change without prior notice.

