

Fence

MSC5404

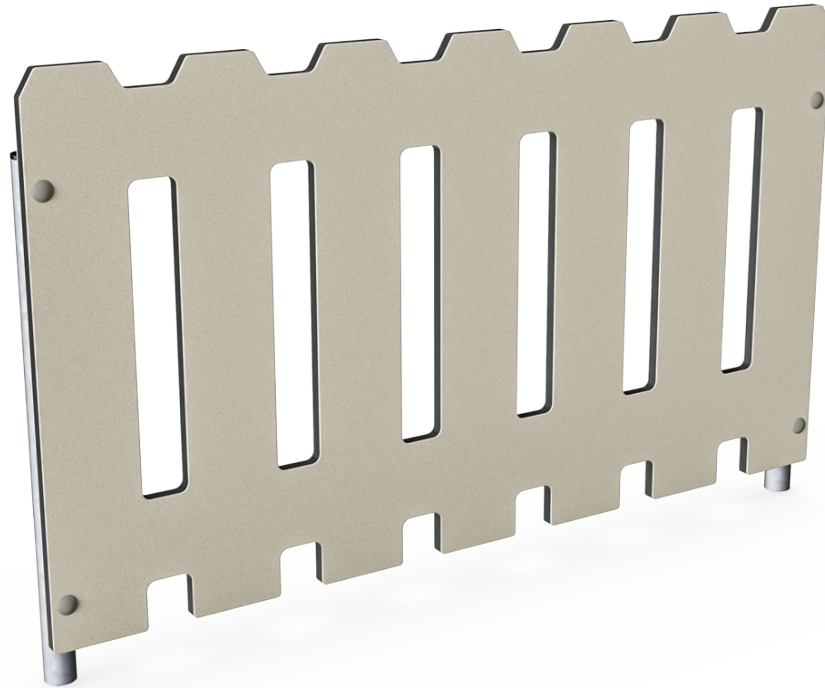

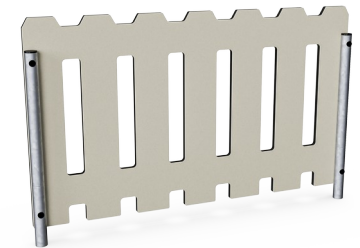


plate with two legs

Item no. MSC540400-3417P	
General Product Information	
Dimensions LxWxH	115x6x71 cm
Age group	6m+
Play capacity (users)	-
Colour options	



Fence

MSC5404

Fence

MSC5404

Item no. MSC540400-3417P

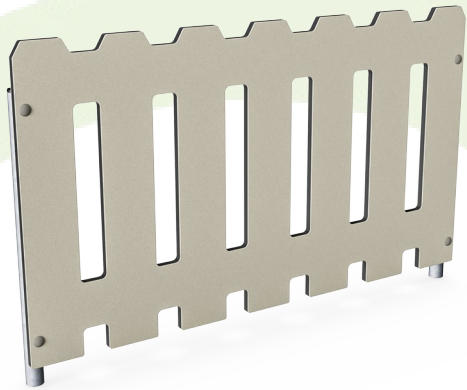
Installation Information

Max. fall height	0 cm
Safety surfacing area	0.0 m ²
Number of installers	2
Total installation time	2.2
Excavation volume	0.11 m ³
Concrete volume	0.00 m ³
Footing depth (standard)	60 cm
Shipment weight	20 kg
Anchoring options	In-ground ✓ Surface ✓

Warranty Information

EcoCore HDPE	Lifetime
Movable parts	2 years
Hot dip galvanised steel	Lifetime
Membrane	2 years
Spare parts guaranteed	10 years





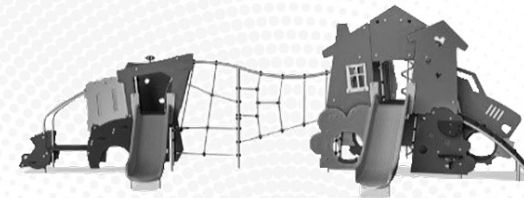
Cradle to Gate A1-A3	Total CO ₂ emission	CO ₂ e/kg	Recycled materials
	kg CO ₂ e	kg CO ₂ e/kg	%
MSC540400-3417P	38.50	2.01	61.70

The overall framework applied for these factors is the Environmental Product Declaration (EPD), which quantifies "environmental information on the life cycle of a product and enable comparisons between products fulfilling the same function" (ISO, 2006). This follows the structure and applies a Life-Cycle Assessment approach to the entire Product stage from raw material through manufacturing (A1-A3))

Kompan A/S
 C.F. Tietgens Boulevard 32C
 DK-5220 Odense SØ
 Denmark



Validation of CO₂ calculation of: Themed play systems



Data version no. 2021-09-27

The CO₂ calculation and data are in compliance with the principles of a carbon footprint impact according to the GHG protocol (Greenhouse Gas Protocol), Scope 3, cradle to gate related to all individual components in the product category: "Themed play systems" represented by item no.: MSC641100-3717P.

(Scope 3 emissions include emission sources in the upstream and downstream value chain).

Date: 15. October 2021 | Valid until: 15. October 2023

Validated by:

Bente Hviid, Senior Consultant

Peter Bendtsen, Senior Consultant

Validation based on report: Validation of CO₂ calculation of 8 categories of Kompan product line, version 1.0, prepared by: Bureau Veritas HSE, Denmark: Bente Hviid and Peter Bendtsen.

Publication date: 15. October 2021

By Bureau Veritas HSE
 www.bureauveritas.dk
 +45 7731 1000

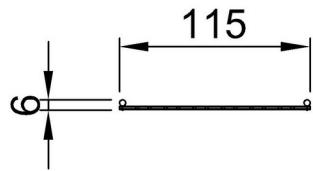


Fence

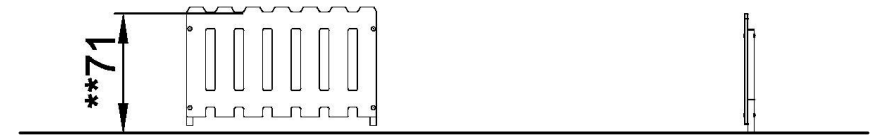
MSC5404

* Max fall height | ** Total height | *** Safety surfacing area

* Max fall height | ** Total height



MSC540400-xx17P
**71cm



MSC540400P
1:100

[Click to see TOP VIEW](#)

[Click to see SIDE VIEW](#)