

Playhouse with Balcony

PCM002321



Item no. PCM002321-0601	
General Product Information	
Dimensions LxWxH	204x164x186 cm
Age group	6m+
Play capacity (users)	14
Colour options	● ● ● ●



This activity packed, home-themed playhouse will attract and excite toddlers again and again. There are several features that greatly increase play value; the scale of the house is perfect for toddlers, the flower window adds to the overall transparency so that children can play together from the outside and the inside of the house and the shop counter desk features a conveyor

belt made of small wheels, providing a great tactile sensation. The crawl-through panel encourages children to crawl and explore. These activities stimulate cross-modal perception, important for improving reading skills and support cross-coordination awareness which is key to physical and cognitive development at this age. The sand

tube panel and Peek a boo panel stimulate the understanding of object permanence: that items may still exist even though out of sight.



Data is subject to change without prior notice.

Playhouse with Balcony

PCM002321



Window with curtains

Physical: tactile stimulation supports sensory skills, when children explore the characteristics (e.g., hardness, weight) of the materials.

Social-emotional: social interaction between inside and outside, supporting turn-taking and cooperation skills.

Cognitive: understanding of object permanence when playing games such as peek-a-boo. Dramatic play support, encouraging language skills.

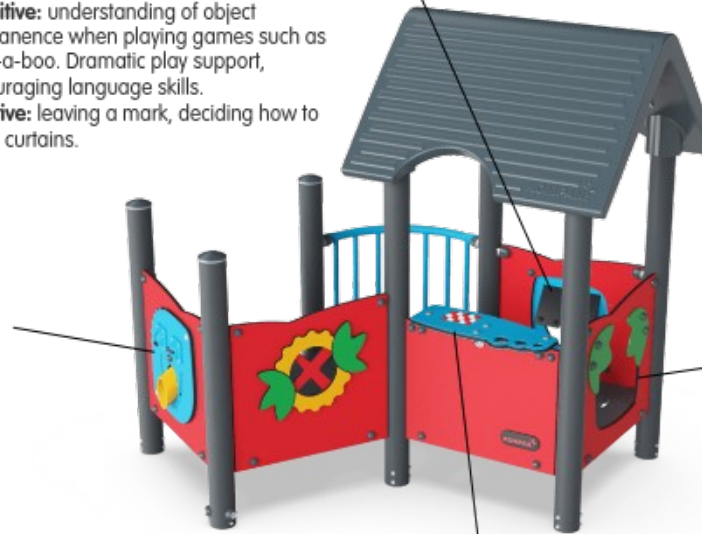
Creative: leaving a mark, deciding how to place curtains.



Funnel panel

Social-emotional: trains cooperation and turn-taking as children put materials into the funnel from both sides.

Cognitive: the passing of materials through funnels supports the children's logical thinking and for younger children the understanding of object permanence: that materials don't vanish, but run through at the other end.



Crawl-through hole

Physical: the hole allows for climbing and crawling through, developing cross coordination, proprioception and spatial awareness.

Social-emotional: cooperation and turn-taking when passing one another.

Cognitive: understanding space, shape and measures when seeing if the body can fit through the hole.



Desk with conveyor belt

Physical: tactile stimulation from running hands over rolling spheres on conveyor belt.

Social-emotional: sharing and cooperation from both sides create a social scenario that supports communication and cooperation.

Cognitive: supports dramatic play scenarios, trains cause and effect understanding.

Playhouse with Balcony

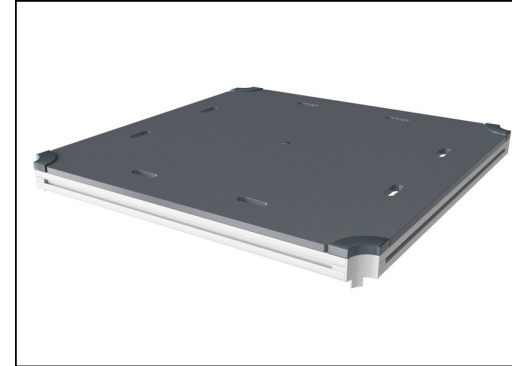
PCM002321



Panels of 19mm EcoCore™. EcoCore™ is a highly durable, eco friendly material, which is not only recyclable after use, but also consists of a core produced from 100% recycled post consumer material from food packing waste. Wooden panels of impregnated and brown painted pine wood with vertical steel profiles.



Main posts with hot dip galvanized steel footing are available in different materials: Pressure impregnated pine wood posts. Pre-galvanized inside and outside with powder coated top finish steel posts. Lead free aluminum with color anodized top finish. Greenline TexMade posts of 100% post-consumer recycled PE and textile waste.



All decks are supported by unique designed low-carbon aluminum profiles with multiple attachment options. The grey colored molded decks are made of 75% post-consumer ocean waste PP material with a non-skid pattern and texture surface.



Roof is made from rotomoulded PE. PE has high impact resistance across a wide temperature span which ensures durability.



Coloured steel components have a base of hot dip galvanisation and a powder coated top finish. This provides an ultimate corrosion resistance in all climates around the world.



KOMPAN GreenLine versions are designed with ultimate environmentally friendly materials with lowest possible CO2e emission factor such as EcoCore™ panels of 100% post consumer recycled ocean waste.

Item no. PCM002321-0601

Installation Information

Max. fall height	28 cm
Safety surfacing area	17.5 m ²
Number of installers	2
Total installation time	10.9
Excavation volume	0.17 m ³
Concrete volume	0.00 m ³
Footing depth (standard)	60 cm
Shipment weight	222 kg
Anchoring options	

Warranty Information

EcoCore HDPE	Lifetime
Post	10 years
PP Decks	10 years
Spare parts guaranteed	10 years





Cradle to Gate A1-A3	Total CO ₂ emission	CO ₂ e/kg	Recycled materials
	kg CO ₂ e	kg CO ₂ e/kg	%
PCM002321-0601	468.10	2.74	46.30
PCM002321-0650	316.80	1.61	68.50

The overall framework applied for these factors is the Environmental Product Declaration (EPD), which quantifies "environmental information on the life cycle of a product and enable comparisons between products fulfilling the same function" (ISO, 2006). This follows the structure and applies a Life-Cycle Assessment approach to the entire Product stage from raw material through manufacturing (A1-A3))

Kompan A/S
 C.F. Tietgens Boulevard 32C
 DK-5220 Odense SØ
 Denmark



Validation of CO₂ calculation of: Play systems



Data version no. 2021-01-11

The CO₂ calculation and data are in compliance with the principles of a carbon footprint impact according to the GHG protocol (Greenhouse Gas Protocol), Scope 3, cradle to gate related to all individual components in the product category: "Play systems" represented by item no.: PCM200309-0010. (Scope 3 emissions include emission sources in the upstream and downstream value chain).

Date: 15. October 2021 | Valid until: 15. October 2023

Validated by:

Bente Hviid, Senior Consultant

Peter Bendtsen, Senior Consultant

Validation based on report: Validation of CO₂ calculation of play systems – Kompan, version 1.0, prepared by: Bureau Veritas HSE, Denmark: Bente Hviid and Peter Bendtsen.

Publication date: 15. October 2021

By Bureau Veritas HSE
 www.bureauveritas.dk
 +45 7731 1000

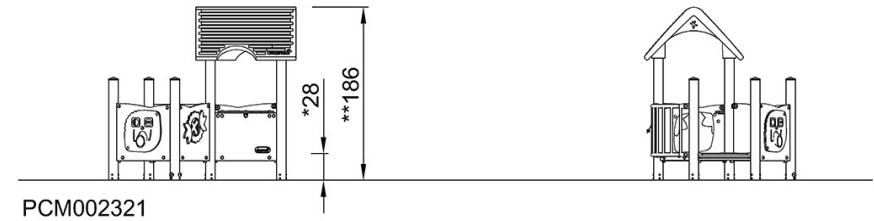
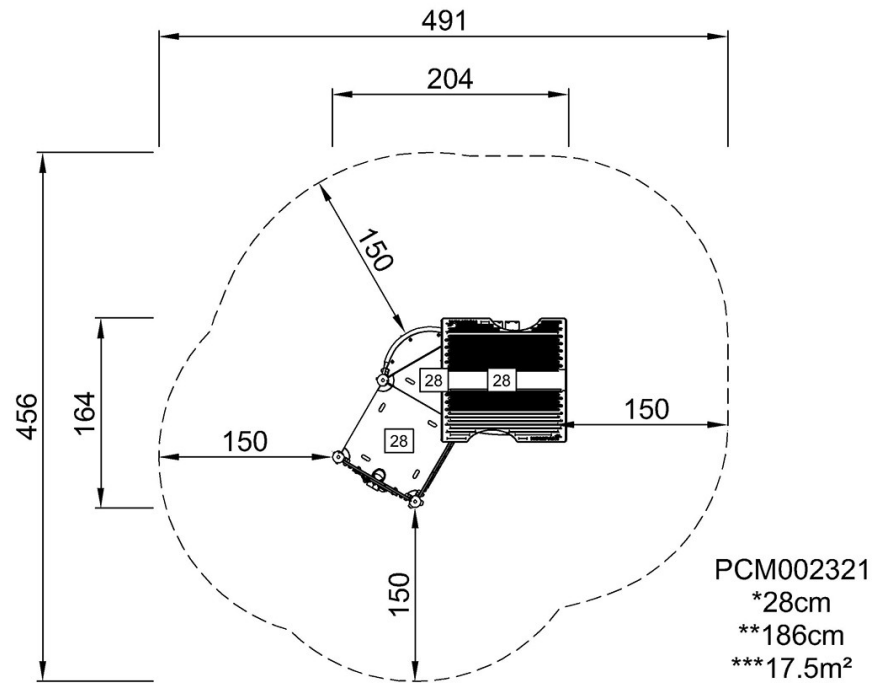


Playhouse with Balcony

PCM002321

* Max fall height | ** Total height | *** Safety surfacing area

* Max fall height | ** Total height



[Click to see TOP VIEW](#)

[Click to see SIDE VIEW](#)