

Barn

PCM51421

KOMPAN
Let's play



Item no. PCM51421-0901

General Product Information

Dimensions LxWxH	477x411x338 cm
Age group	2+
Play capacity (users)	17
Colour options	



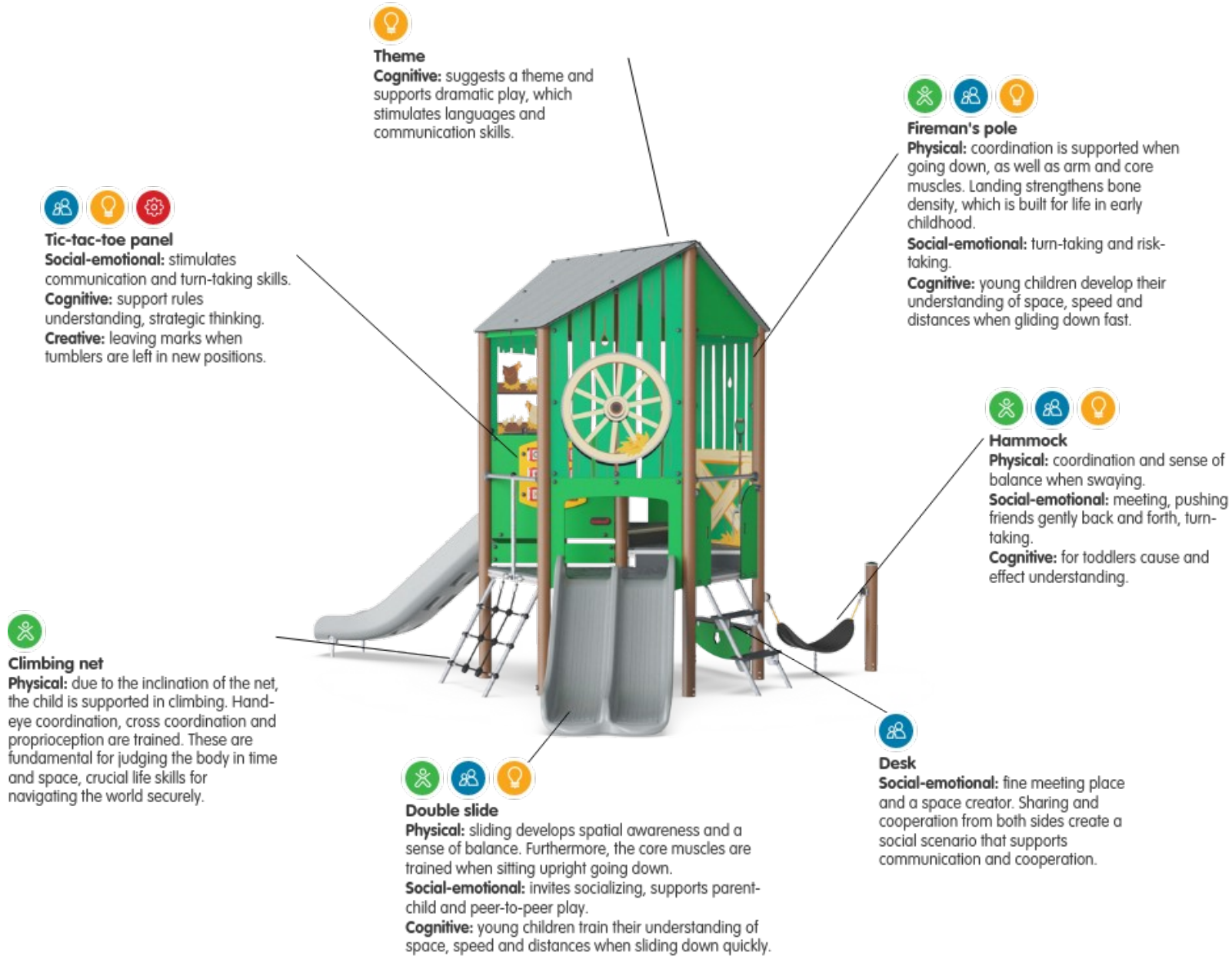
The Barn with its farm themed illustrations is a great attractor of dramatic and fun physical play for all younger children. The variety of manipulative and fun physical activities on elevated and ground level support dramatic play scenarios. Varied climb, crawl, sway and slide activities attract hugely and ensure physical activity that trains important motor

skills and major muscles. Inclined net and stair accesses make for a secure, yet fun climb up. This trains cross-coordination, which builds body confidence and ultimately stimulates the cross-modal perception. This supports for instance reading skills. The slide and double slide vary the choice of going down. And on ground level, around and under the platform, a

nice desk and hammock makes an attractive gathering point, supporting children's social-emotional skills. Dramatic play is the favorite play type for younger children. In the case of the Barn, storytelling themes of house, farm and production can be put to play, again and again.



Data is subject to change without prior notice.



Barn

PCM51421



Panels of 19mm EcoCore™. EcoCore™ is a highly durable, eco friendly material, which is not only recyclable after use, but also consists of a core produced from 100% recycled post consumer material from food packing waste.



Main posts with hot dip galvanised steel footing are pre-galvanised inside and outside with powder coated top finish.



All decks are supported by unique designed low-carbon aluminum profiles with multiple attachment options. The grey colored molded decks are made of 75% post-consumer ocean waste PP material with a non-skid pattern and texture surface.

Item no. PCM51421-0901

Installation Information

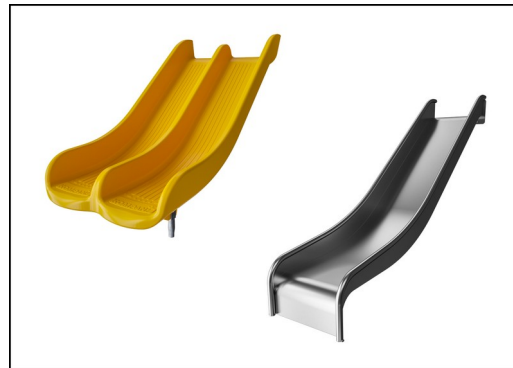
Max. fall height	118 cm
Safety surfacing area	36.4 m ²
Number of installers	2
Total installation time	20.9
Excavation volume	1.00 m ³
Concrete volume	0.96 m ³
Footing depth (standard)	90 cm
Shipment weight	760 kg
Anchoring options	In-ground ✓ Surface ✓

Warranty Information

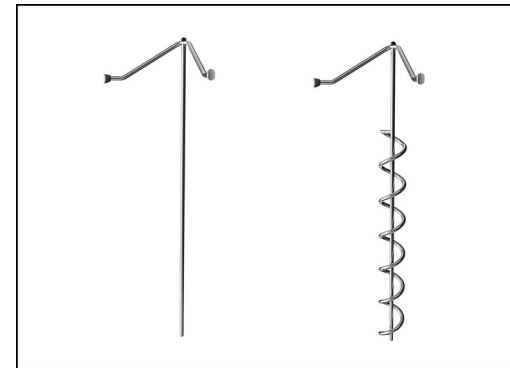
EcoCore HDPE	Lifetime
Post	10 years
PP Decks	10 years
Hollow PE parts	10 years
Spare parts guaranteed	10 years



High-quality polycarbonate with a thickness of 15mm. The graphic prints are added by a unique multi-layer print process where the inner layer is the image and outer transparent layer functions as protection. Both PC panel and the water-based lacquer are UV stabilized to prevent fading.



The slides are available in either moulded PE in different colours or in full stainless steel AISI304 t= 2mm.



The stainless steel activities are made of high quality stainless steel. The steel is glass blasted after manufacturing to ensure a smooth gliding surface.

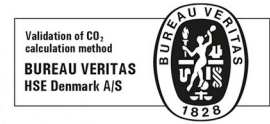




Cradle to Gate A1-A3	Total CO ₂ emission	CO ₂ e/kg	Recycled materials
	kg CO ₂ e	kg CO ₂ e/kg	%
PCM51421-0901	1,745.20	3.00	43.20

The overall framework applied for these factors is the Environmental Product Declaration (EPD), which quantifies "environmental information on the life cycle of a product and enable comparisons between products fulfilling the same function" (ISO, 2006). This follows the structure and applies a Life-Cycle Assessment approach to the entire Product stage from raw material through manufacturing (A1-A3))

Kompan A/S
 C.F. Tietgens Boulevard 32C
 DK-5220 Odense SØ
 Denmark



Validation of CO₂ calculation of: Play systems



Data version no. 2021-01-11

The CO₂ calculation and data are in compliance with the principles of a carbon footprint impact according to the GHG protocol (Greenhouse Gas Protocol), Scope 3, cradle to gate related to all individual components in the product category: "Play systems" represented by item no.: PCM200309-0010. (Scope 3 emissions include emission sources in the upstream and downstream value chain).

Date: 15. October 2021 | Valid until: 15. October 2023

Validated by:

Bente Hviid, Senior Consultant

Peter Bendtsen, Senior Consultant

Validation based on report: Validation of CO₂ calculation of play systems – Kompan, version 1.0, prepared by: Bureau Veritas HSE, Denmark: Bente Hviid and Peter Bendtsen.

Publication date: 15. October 2021

By Bureau Veritas HSE
 www.bureauveritas.dk
 +45 7731 1000



