
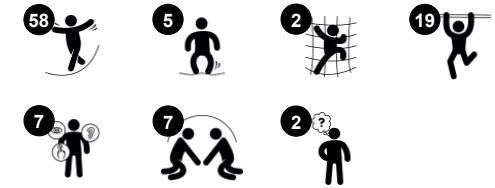
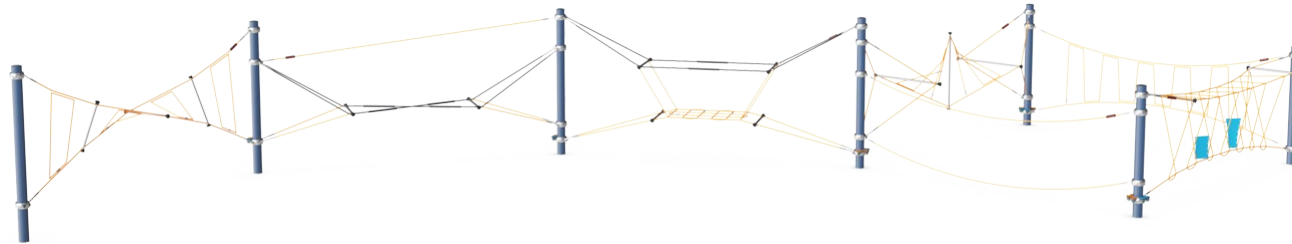


# Forest Trail

CRP251501

|                                    |   |
|------------------------------------|---|
| Item no. CRP251501-0903            |   |
| <b>General Product Information</b> |   |
| Dimensions LxWxH                   | 1454x1983x287 cm  |
| Age group                          | 6+  |
| Play capacity (users)              | 42  |
| Colour options                     |  |



The gigantic Forest Trail attracts children hugely and keep them coming back with its variation of play loops, meeting points and bouncing, balancing activities. The rich variety of balancing, swaying and climb-and-crawl activities are great to help develop children's sense of balance, coordination and proprioception, which is fundamental for

building a range of life skills. When playing "the ground is made of lava" on the challenging loops of the Forest Trail, children develop motor skills and muscles, whilst also using and building important social-emotional skills such as turn-taking, empathy, teamworking and communication skills. The bouncy, swaying range of challenging play makes the trail a high

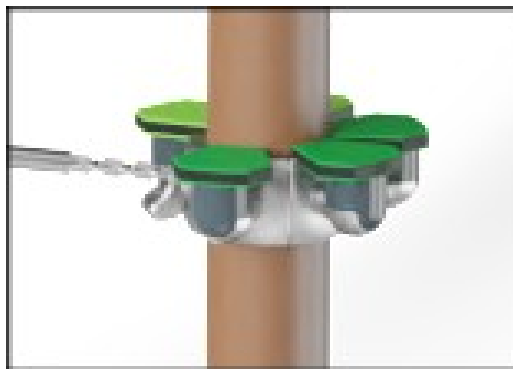
retention play event that manages to support children's development through fun play.

# Forest Trail

CRP251501



Ropes are made of UV-stabilized PES rope strands with inner steel cable reinforcement. The polyester wrapping is inductively melted onto each strand to obtain excellent wear and tear resistance.



Panels of 19mm EcoCore™. EcoCore™ is a highly durable, eco friendly material, which is not only recyclable after use, but also consists of a core produced from 100% recycled post consumer material from food packing waste.



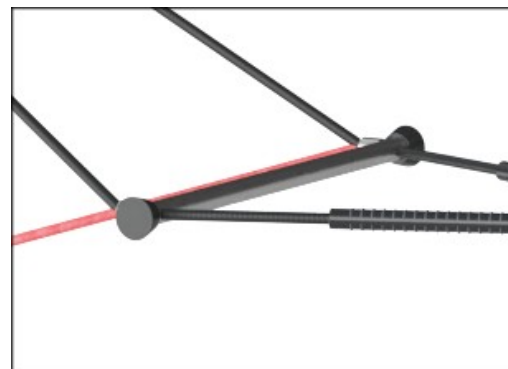
Corocord 'S' clamps are used as universal connections in Corocord products. 8mm stainless steel rods with rounded edges are pressed around the ropes with a special hydraulic press, making them the ideal connector: safe, durable and vandalism-proof, all while allowing the typical movement of rope play structures.



Colored steel components have a base of hot dip galvanization and a powder coated top finish. This provides an ultimate corrosion resistance in all climates around the world. Other steel surfaces are hot dip galvanized inside and outside with lead free zinc.



Corocord smart clamps are carefully designed in every detail to ensure superior flexibility in high quality aluminum material. The smart clamps are attached around the posts with four steel bolts. Not used attachment points are closed with PA caps.



Decorative elements (fish-shaped) are made of stainless steel.

Item no. CRP251501-0903

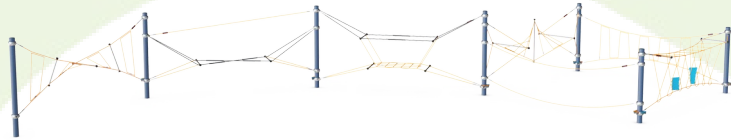
### Installation Information

|                          |                          |
|--------------------------|--------------------------|
| Max. fall height         | 270 cm                   |
| Safety surfacing area    | 183.9 m <sup>2</sup>     |
| Total installation time  | 29.0                     |
| Excavation volume        | 18.21 m <sup>3</sup>     |
| Concrete volume          | 10.12 m <sup>3</sup>     |
| Footing depth (standard) | 90 cm                    |
| Shipment weight          | 1,243 kg                 |
| Anchoring options        | Surface ✓<br>In-ground ✓ |

### Warranty Information

|                          |          |
|--------------------------|----------|
| Hot dip galvanised steel | Lifetime |
| Painted toplayer         | 10 years |
| Ropes & nets             | 10 years |
| Aluminium clamps         | 10 years |
| Spare parts guaranteed   | 10 years |





| Cradle to Gate A1-A3 | Total CO <sub>2</sub> emission | CO <sub>2</sub> e/kg    | Recycled materials |
|----------------------|--------------------------------|-------------------------|--------------------|
|                      | kg CO <sub>2</sub> e           | kg CO <sub>2</sub> e/kg | %                  |
| CRP251501-0903       | 3,679.30                       | 3.93                    | 39.00              |

The overall framework applied for these factors is the Environmental Product Declaration (EPD), which quantifies "environmental information on the life cycle of a product and enable comparisons between products fulfilling the same function" (ISO, 2006). This follows the structure and applies a Life-Cycle Assessment approach to the entire Product stage from raw material through manufacturing (A1-A3))

**Kompan A/S**  
 C.F. Tietgens Boulevard 32C  
 DK-5220 Odense SØ  
 Denmark



### Validation of CO<sub>2</sub> calculation of: Corocord



Data version no. 2021-09-27

The CO<sub>2</sub> calculation and data are in compliance with the principles of a carbon footprint impact according to the GHG protocol (Greenhouse Gas Protocol), Scope 3, cradle to gate related to all individual components in the product category: "Corocord" represented by item no.: COR314011-1101.

(Scope 3 emissions include emission sources in the upstream and downstream value chain).

**Date: 15. October 2021 | Valid until: 15. October 2023**

**Validated by:**

Bente Hviid, Senior Consultant

Peter Bendtsen, Senior Consultant

Validation based on report: Validation of CO<sub>2</sub> calculation of 8 categories of Kompan product line, version 1.0, prepared by: Bureau Veritas HSE, Denmark: Bente Hviid and Peter Bendtsen.

**Publication date: 15. October 2021**

**By Bureau Veritas HSE**  
 www.bureauveritas.dk  
 +45 7731 1000

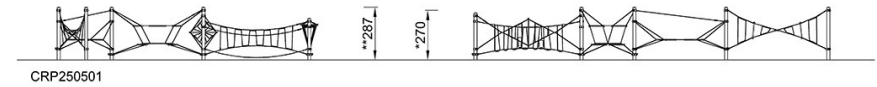
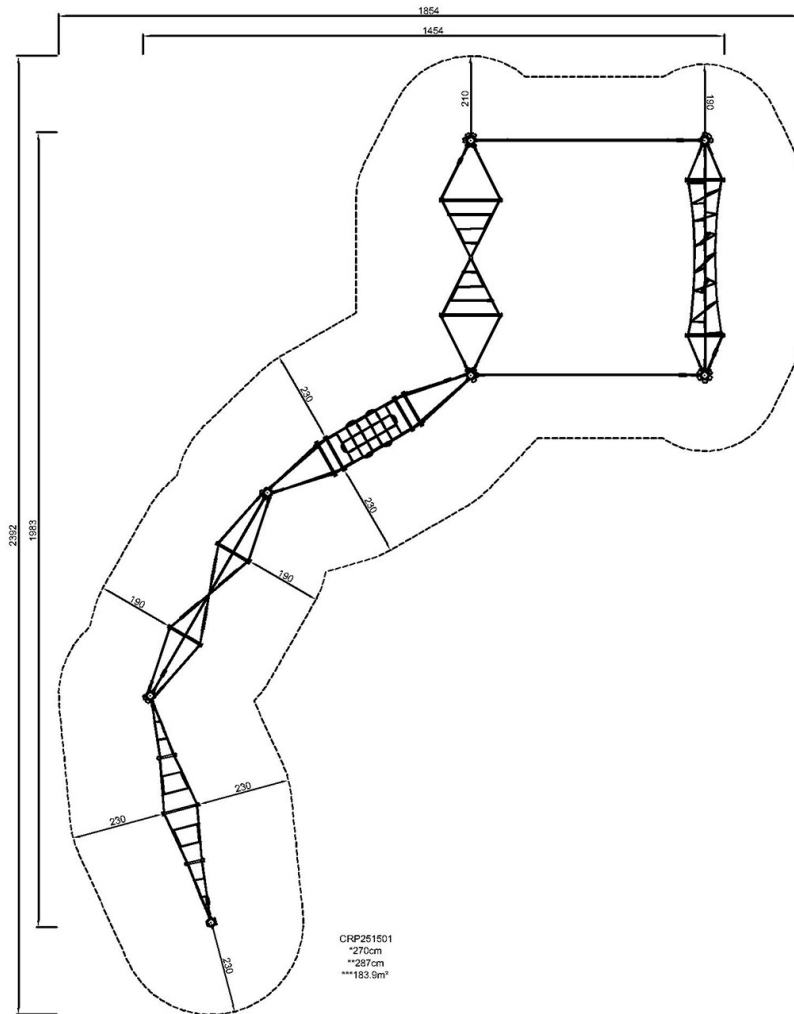


# Forest Trail

CRP251501

\* Max fall height | \*\* Total height | \*\*\* Safety surfacing area

\* Max fall height | \*\* Total height



[Click to see TOP VIEW](#)

[Click to see SIDE VIEW](#)