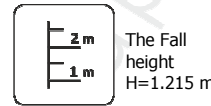
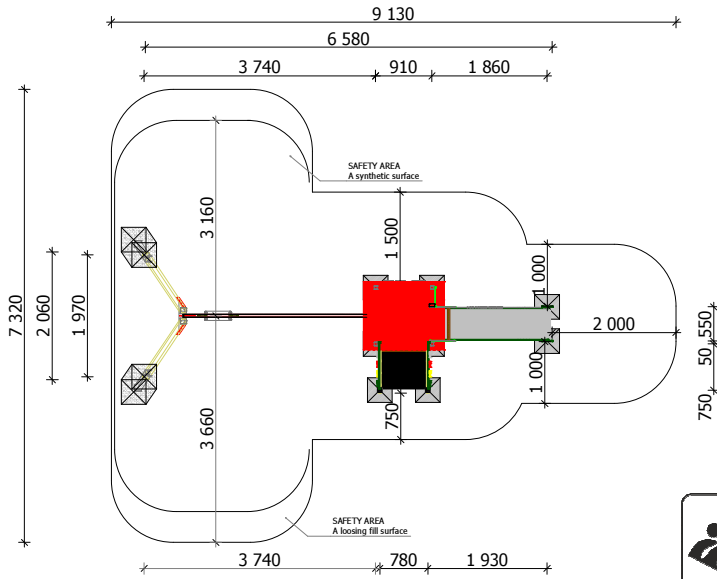




Construction are made from glued wood, galvanized steel and HDPE.



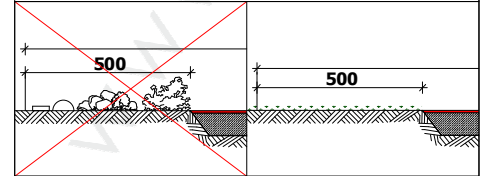
Minimal required area - 39 m<sup>2</sup>

Length: 6 580 mm  
Width: 2 060 mm  
Height: 3 050 mm

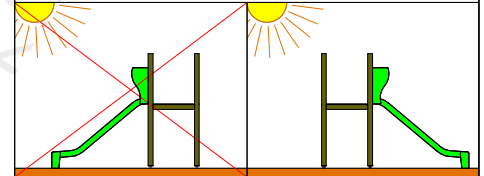
Playground are provided for outdoor use in supervising of adults

Length of safety area: 9 130 mm  
Width of safety area: 7 320 mm  
Required safety area: 42 m<sup>2</sup>

There must be in addition to 500 mm free of any obstacles in the swing direction to the rubber surface area.



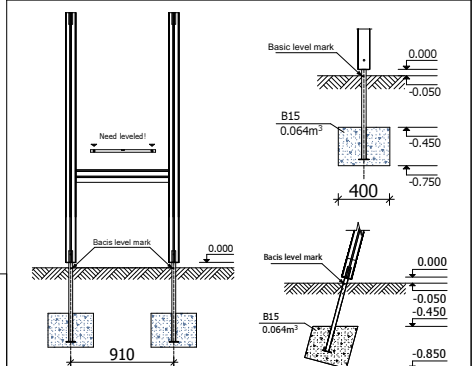
Do not place stainless steel slide directly to south!



Equipment safety checkings must be performed once in a week in high vandalism risk areas.

Maintainance are required once in every 3 months, depending on usage

Play equipment are established with concreted steel foundation in equipment location. Equipment are suitable for use in two days after concreting, when the foundation are totally solid. During assembling there are not children allowed in area.



### Adequate temperature

T<sub>min</sub> -33.2 °C  
T<sub>max</sub> +70.4 °C



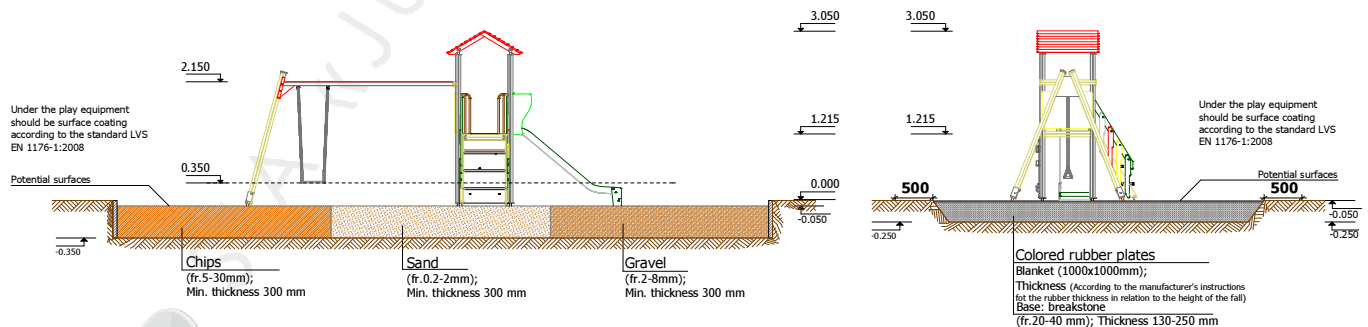
### Snow load

1.54 kN/m<sup>2</sup>



### Wing load

Stiprums 427.4 N



**Transportation:** One palette and one pack: 1 palette 2 600 x 1 000 x 500 mm  
1 pack - SUP metal detail

**Spare parts:** All needed spare parts and elements, when warranty time expires can be ordered in „Jūrmalas Mežaparki” Ltd., and all the goods will be ready for delivery in 3 days.

According to LVS EN 1176:2008

Manufactured according to:

