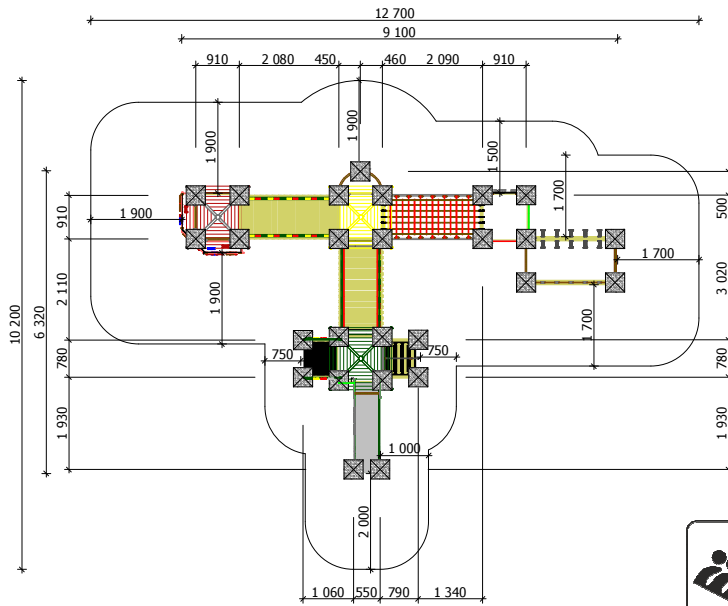
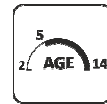




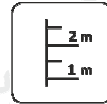
Construction are made from glued wood, galvanized steel and HDPE.



MAX 25 children



Children from 5 - 14 years



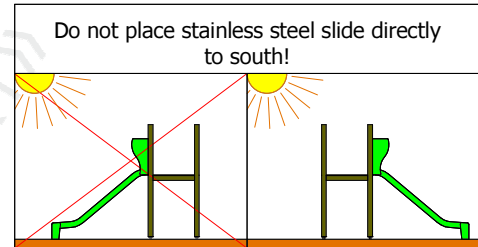
The Fall height H=2.10 m



Weight 730 kg



Assembly 22 h (without excavation and concreting)



Do not place stainless steel slide directly to south!

Equipment safety checkings must be performed once in a week in high vandalism risk areas.

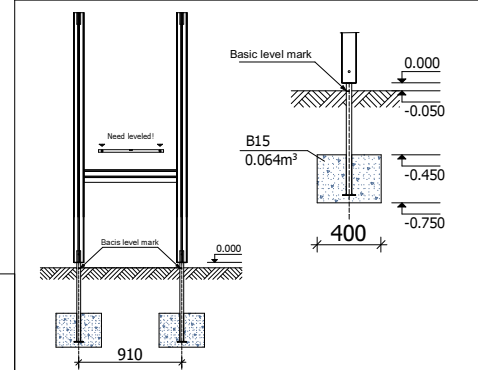
Maintainance are required once in every 3 months, depending on usage

Minimal required area - 77 m²

Lenght: 9 100 mm
Width: 6 320 mm
Height: 3 980 mm

Playground are provided for outdoor use in supervising of adults

Lenght of safety area: 12 700 mm
Width of safety area: 10 200 mm
Required safety area: 77 m²



Play equipment are established with concreted steel foundation in equipment location. Equipment are suitable for use in two days after concreting, when the foundation are totally solid. During assambling there are not children allowed in area.

Adequate temperature

T_{zemākā} -33.2 °C
T_{augstākā} +70.1 °C



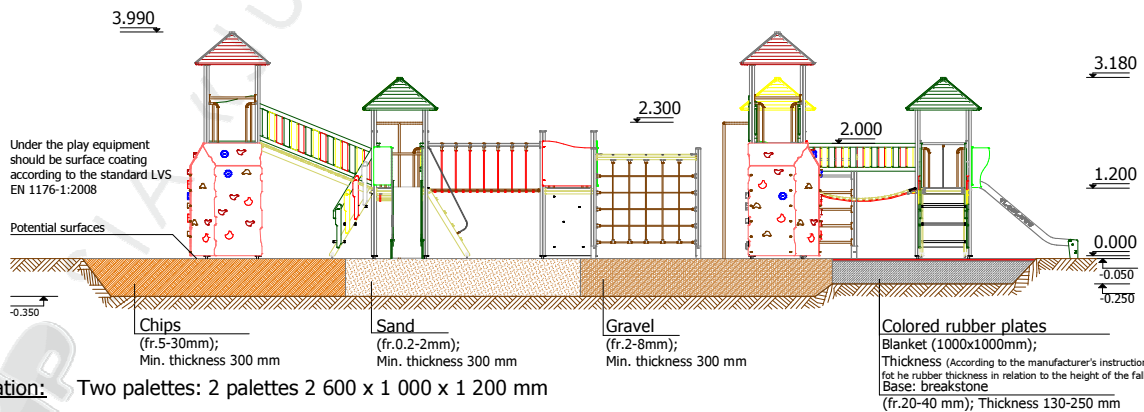
Snow load

1.22 kN/m²



Wing load

Stiprums 525 N



Under the play equipment should be surface coating according to the standard LVS EN 1176-1:2008

Potential surfaces

Chips (fr.5-30mm); Min. thickness 300 mm

Sand (fr.0.2-2mm); Min. thickness 300 mm

Gravel (fr.2-8mm); Min. thickness 300 mm

Colored rubber plates
Blanket (1000x1000mm); Thickness (According to the manufacturer's instructions for the rubber thickness in relation to the height of the fall)
Base: breakstone (fr.20-40 mm); Thickness 130-250 mm

Transportation: Two palettes: 2 palettes 2 600 x 1 000 x 1 200 mm

Spare parts: All needed spare parts and elements, when warranty time expires can be ordered in „Jūrmalas Mežaparki” Ltd., and all the goods will be ready for delivery in 3 days.

According to LVS EN 1176:2008

Manufactured according:

