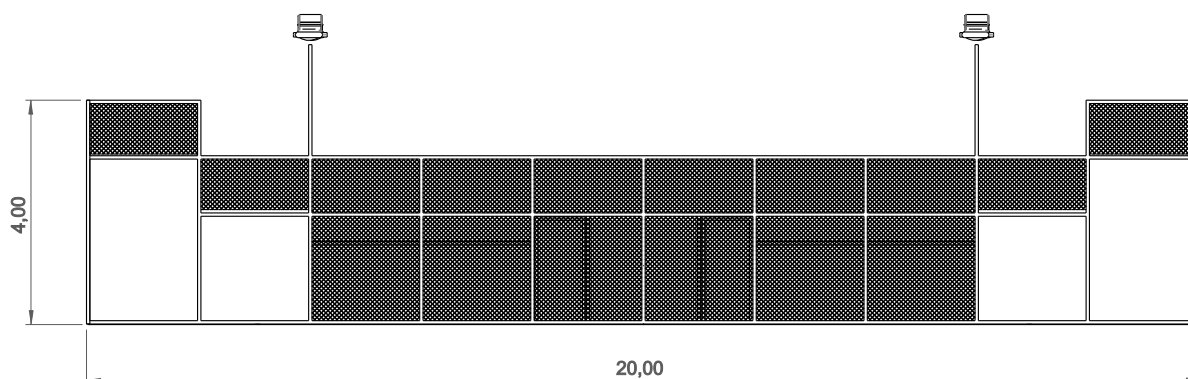
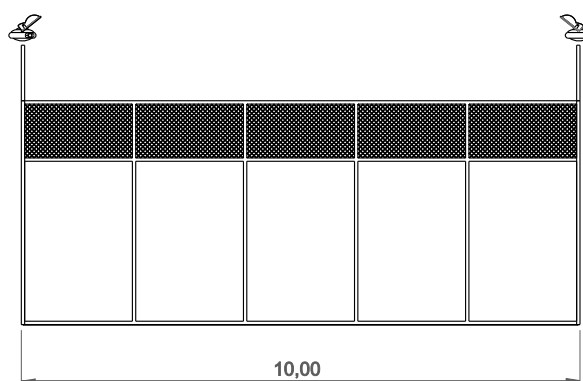


Paddle Field

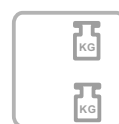
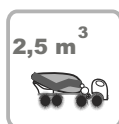
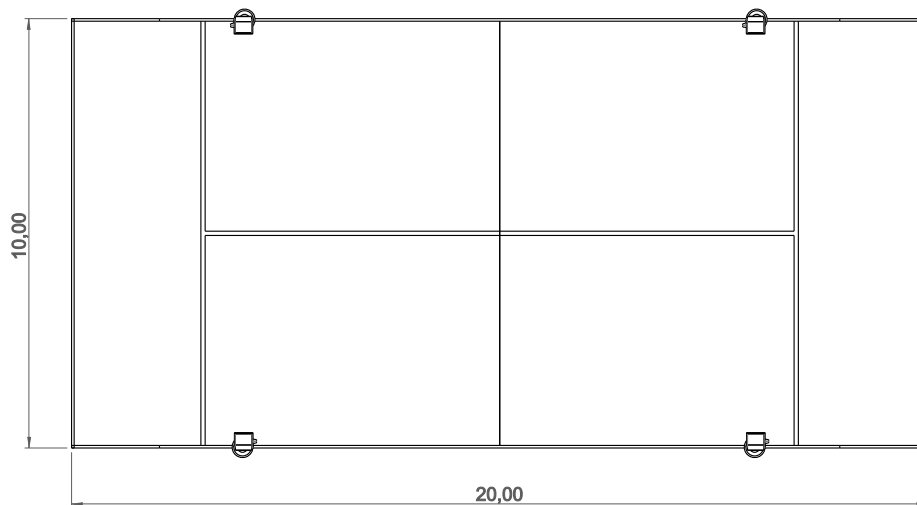
ref. EDCP001



Data Sheet

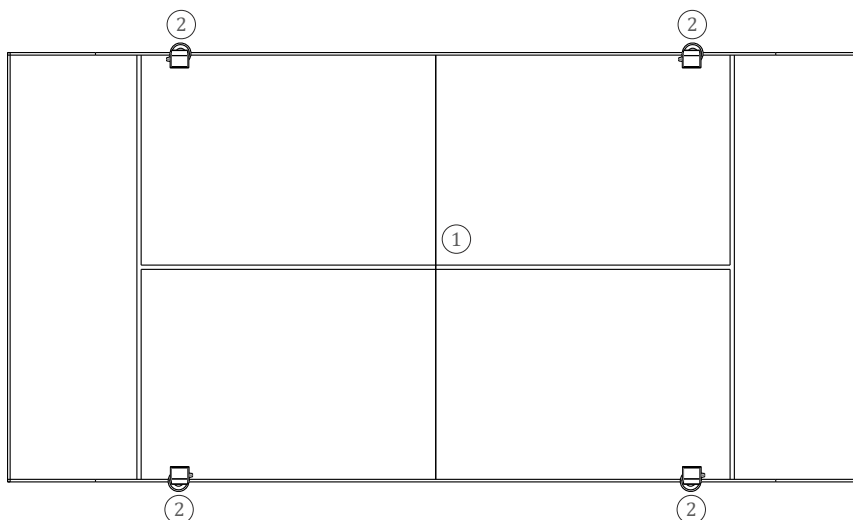


Equipment Information:



Technical Information:

- 1 - Tennis Net
- 2 - Lighting Posts



Technical Characteristics:



Paddle Field: With 20x10m, executed with painted galvanized steel structure, covered with epoxy polyester resin, as technical characteristics;

Mesh: With 50x50x4mm, electrowelded and galvanized without interior lugs. Frames with threaded rod, washers and sows rounded in stainless steel;

Entrance: Double Door with 85cm posts and net included according to the F.E.P.;

Structure: Formed by closed frames 80.40.2 with funds and sides, plates and docking with 300x180x10mm 200x190x10mm. With metal reinforcement supports to 0.5m tall. Anticorrosive treatment of hot dip galvanizing in accordance with EN ISO 1461 .Gel type lacquer at 230 ° C with thickness ranging from 50 to 70µm, according to the UNE EN ISO 2808;

Superior Fence: With horizontal ribs 1 or 2 meters with 40x40x2mm, sealed with PVC lids;

Kit Glass: Facades of glass with 10mm thickness tempered and treated, polished edges for fixing on the structure as lids anti-vibration. 30x8mm conical screws, washers and lock nut. The separation of the glass to metal structure is made with high tensile strength EPDM flooring;

Artificial Turf: Green for Paddle and Tennis with 42,000 points / m², 100% polypropylene, straight from 110 microns to 12 mm in height and 6,600 dtex, manufactured in pre-fibrillated polyethylene and specific additives that are characterized by their high resistance to lightning UV, heat resistant and extreme weather variations, with rounded quartz sand, washed and dried with 97% silice granulometria and 0.2/0.8. In the amount of 18 kg/m², filling height of 7mm on a support of polypropylene fabric 164 g/m², drainage capacity 60L/min/m². Rolls of 4m wide, including marking of play lines. The assembly and laying of each other glued joints is made with geotextile glue and polyurethane glue;

Lighting: Artificial lighting with a light level of 350 lux and uniformity of 0.5% with four teams linked to the structure of the field to 6m in height, executed with structural profile 80.80.3, without invading the zone of play, with four projectors 400W;

Fixation System:

Type B - Standard fixation system composed by steel base screwed to the ground with steel anchors;

Screws and accessories

Screws: Galvanized steel or optionally stainless steel AISI 304;



100% reciclable;

