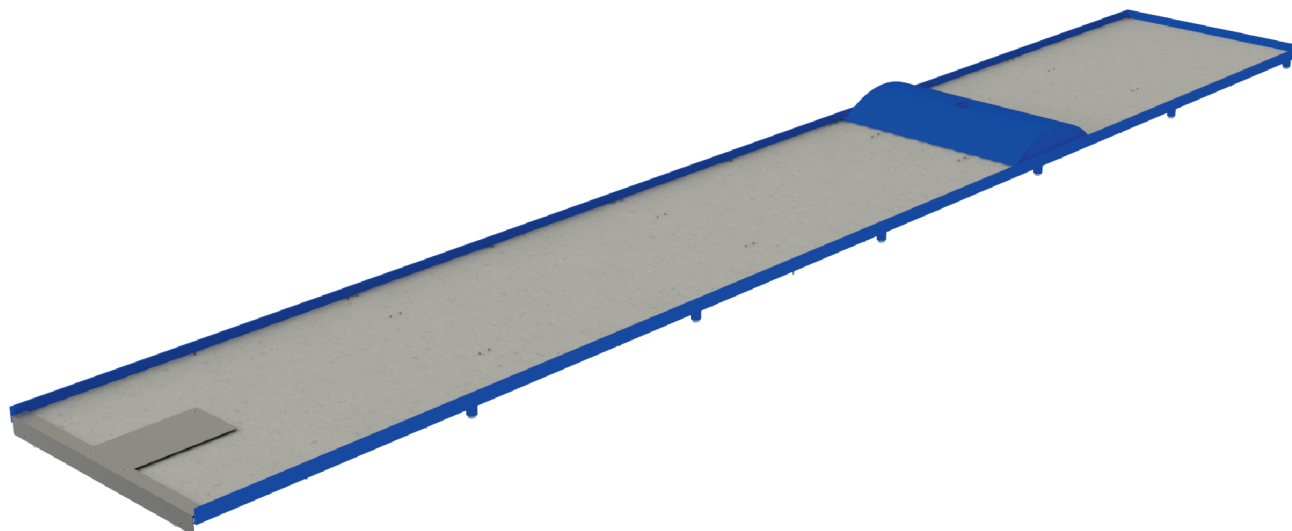


Colina

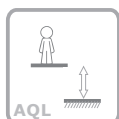
ref. EDMGV004



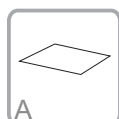
www.bragmaia.com



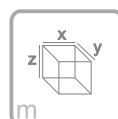
+4 Years



0 m

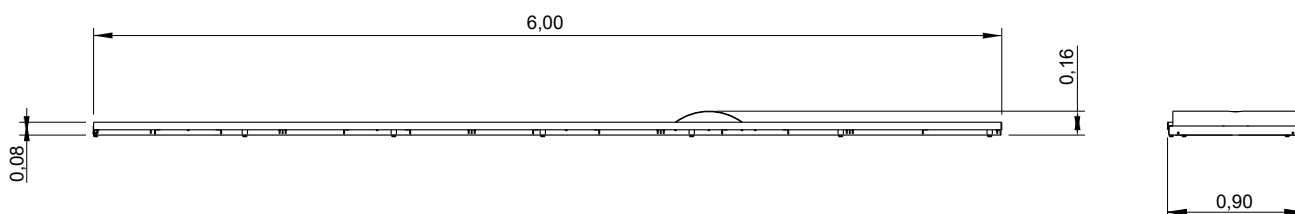


20 m²

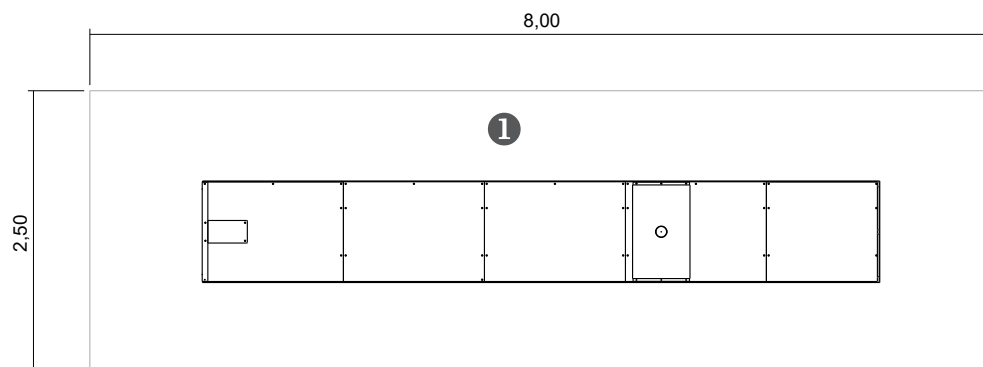


**x= 6,00
y= 0,90
z= 0.16**

Data Sheet



Equipment Information:



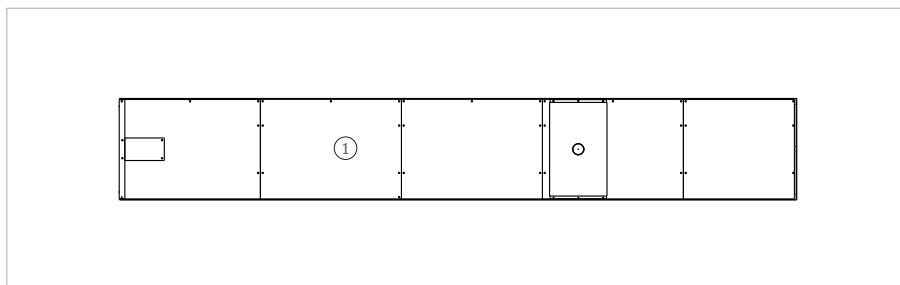
— Impact area
 - - Free space

EN 1176-1,3

.....	①
	0
	20
	20

Technical Information:

1 - Mini-Golfe Colina



Technical Characteristics:



Structure

Iron: Electrozinc and gel type lacquer at 230°C with thickness ranging from 50 to 70µm, according to the UNE EN ISO 2808;

Fixation System:

Type B - Standard fixation system composed by steel base screwed to the ground with steel anchors;

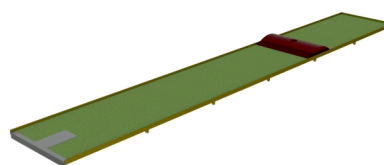
Screws and accessories

Screws: Galvanized steel or optionally stainless steel AISI 304;

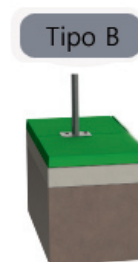
Optional: Synthetic turf base in polypropylene fiber,, height 6mm, green color, 98.500 points/m², density of 2.200 dtex and UV resistant (ref.: EDMGV004);



100% reciclable;



Synthetic Turf Base



Systèmes de Fixation

Playful Activities:



Play: Develops both patience, sharing and sportsmanship.