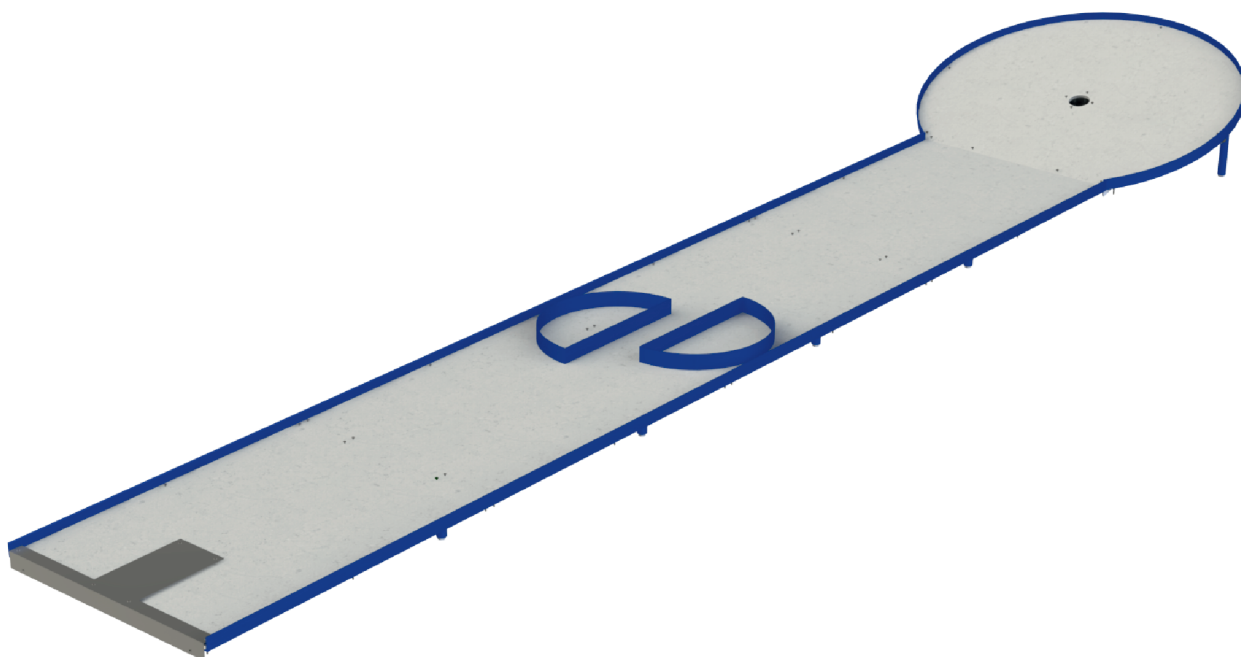


# Rim

ref. EDMGV011

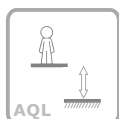


www.bragmaia.com



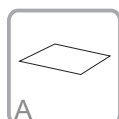
1 Utilizador

**+4 Years**



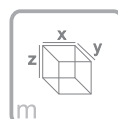
AQL

**0 m**



A

**20 m<sup>2</sup>**



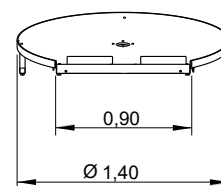
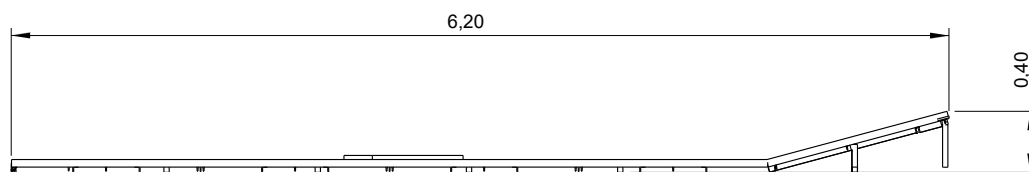
m

**x= 6,20**

**y= 1,40**

**z= 0,40**

Data Sheet

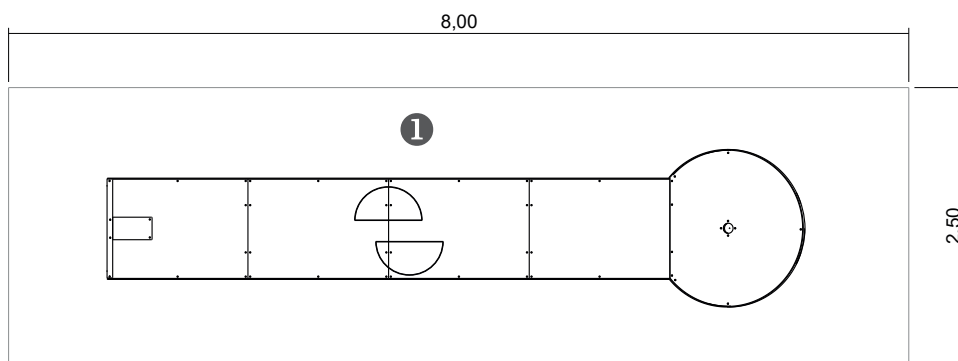


# Equipment Information:



— Impact area  
 - - Free space

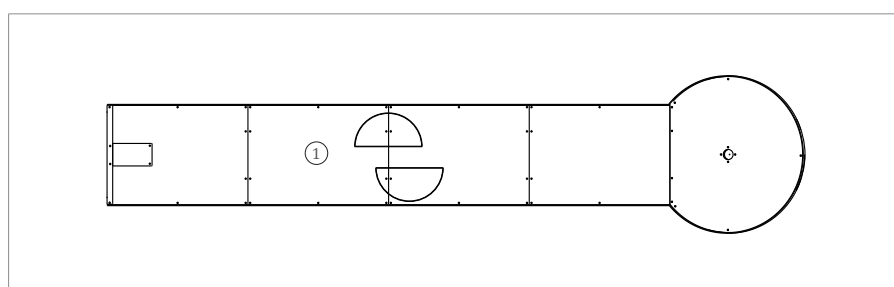
EN 1176-1,3



.....	①
	0
	20
	20

# Technical Information:

1 - Mini-Golfe Rim



# Technical Characteristics:



## Structure

**Iron:** Electrozinc and gel type lacquer at 230°C with thickness ranging from 50 to 70µm, according to the UNE EN ISO 2808;

## Fixation System:

**Type B - Standard fixation system** composed by steel base screwed to the ground with steel anchors;

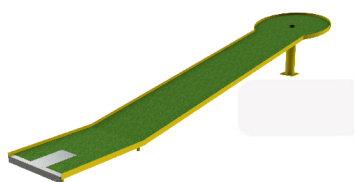
## Screws and accessories

**Screws:** Galvanized steel or optionally stainless steel AISI 304;

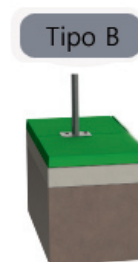
**Optional:** Synthetic turf base in polypropylene fiber,, height 6mm, green color, 98.500 points/m<sup>2</sup>, density of 2.200 dtex and UV resistant (ref.: EDMGV011);



100% reciclable;



Synthetic Turf Base



Systèmes de Fixation

# Playful Activities:



**Play:** Develops both patience, sharing and sportsmanship.