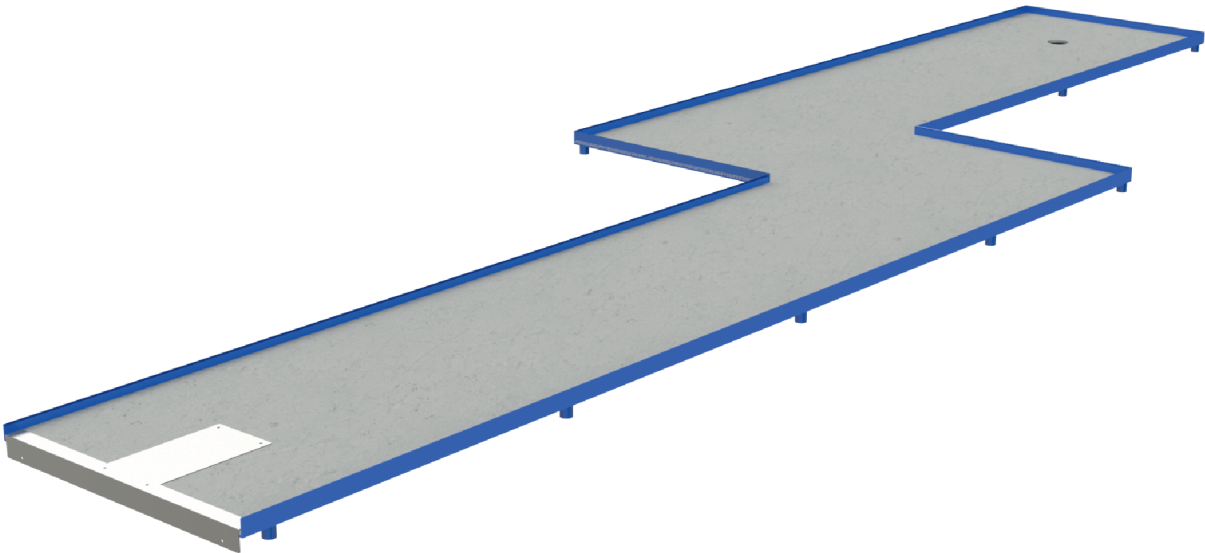


Relâmpago

ref. EDMGV016



www.bragmaia.com

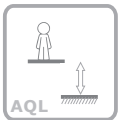


Data Sheet



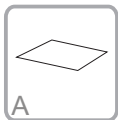
1 Utilizador

+4 Years



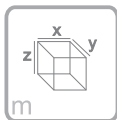
AQL

0 m



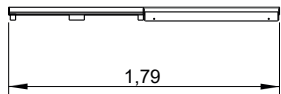
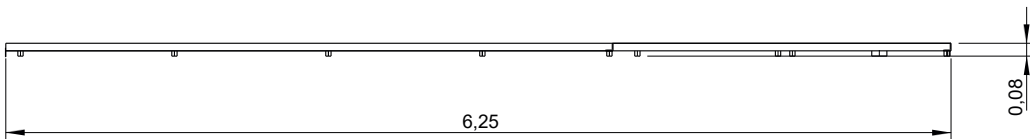
A

27 m²



m

x= 6,25
y= 1,79
z= 0.08



Equipment Information:



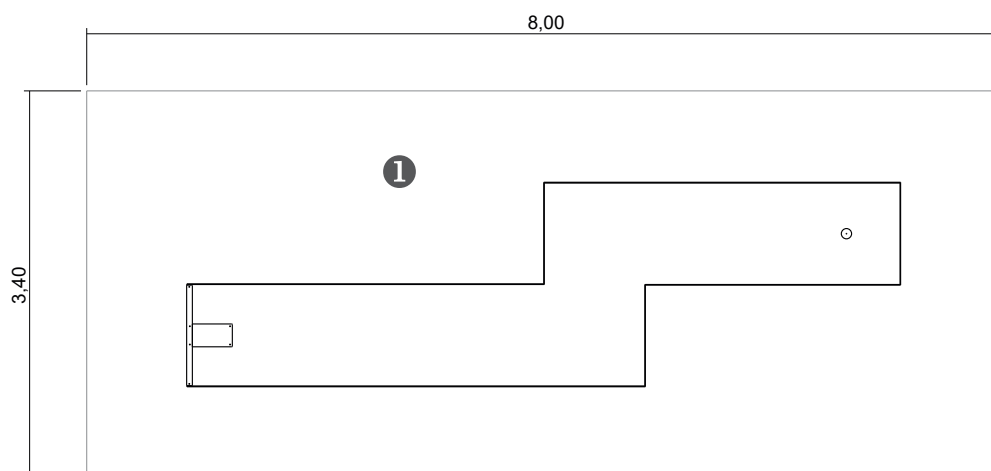
www.bragmaia.com

— Impact area

- - Free space

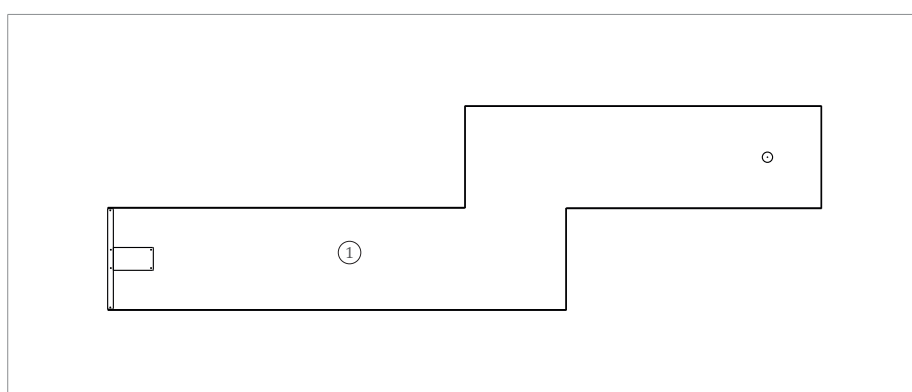
EN 1176-1,3

| | |
|-------|----|
| ***** | ① |
| | 0 |
| | 27 |
| | 27 |



Technical Information:

1 - Mini-Golfe Relâmpago



Technical Characteristics:



Structure

Iron: Electrozinc and gel type lacquer at 230°C with thickness ranging from 50 to 70µm, according to the UNE EN ISO 2808;

Fixation System:

Type B - Standard fixation system composed by steel base screwed to the ground with steel anchors;

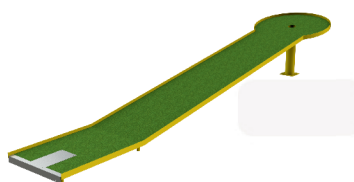
Screws and accessories

Screws: Galvanized steel or optionally stainless steel AISI 304;

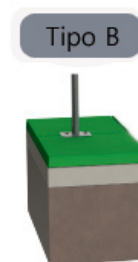
Optional: Synthetic turf base in polypropylene fiber,, height 6mm, green color, 98.500 points/m², density of 2.200 dtex and UV resistant (ref.: EDMGV016);



100% recyclable;



Synthetic Turf Base



Systèmes de Fixation

Playful Activities:



Play: Develops both patience, sharing and sportsmanship.