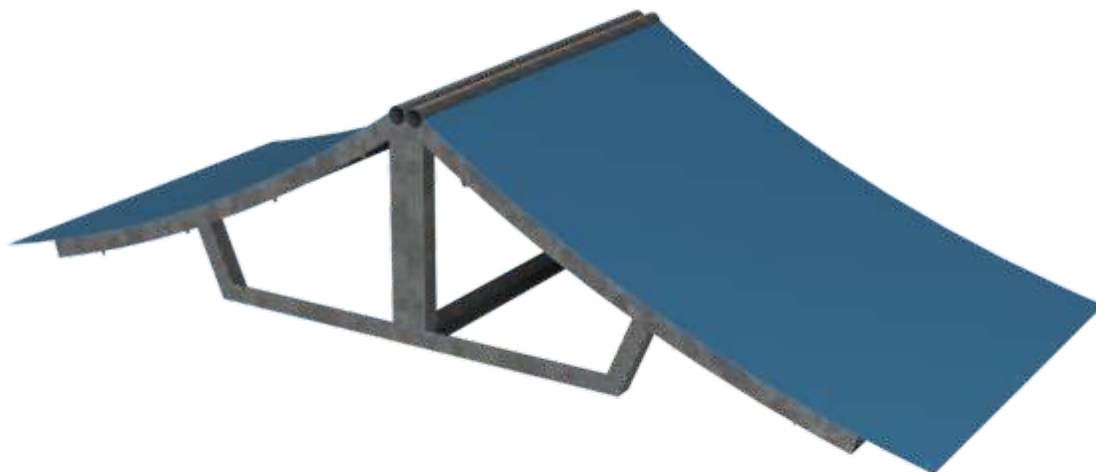


# Spine

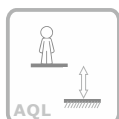
ref. EDPR003



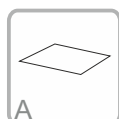
www.bragmaia.com



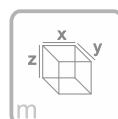
**+8 ANOS**



**0 m**

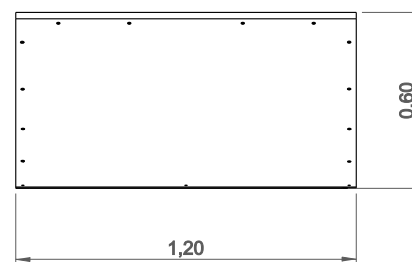
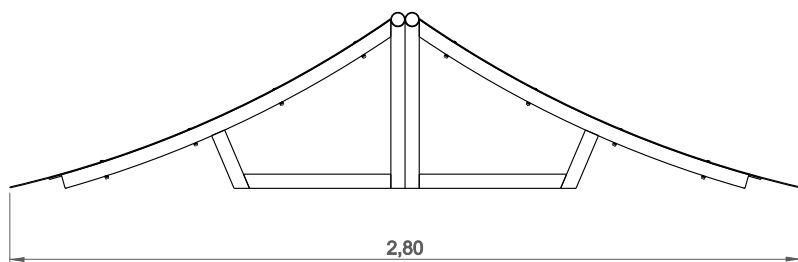


**51 m<sup>2</sup>**



**x= 2.80**  
**y= 1.20**  
**z= 0.60**

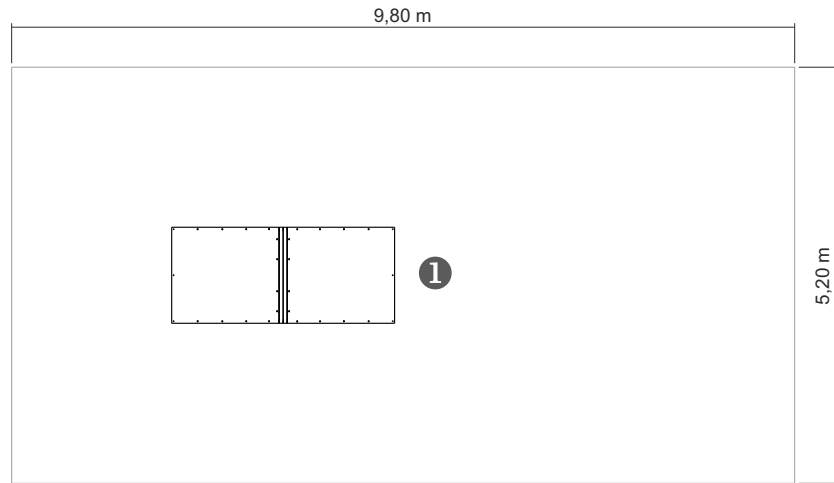
Ficha Técnica



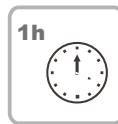
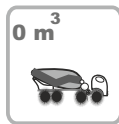
# Informação do Equipamento:



— Zona de impacto  
 - - Espaço livre  
 EN 1176-1,3

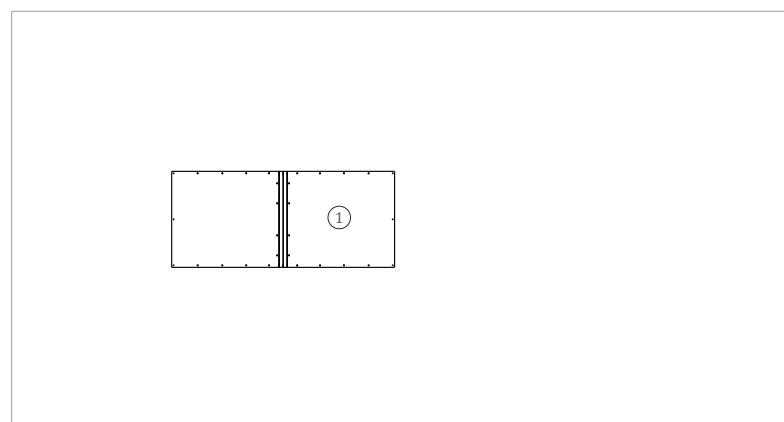


.....	①
	0
	51
	51



# Informação Técnica:

1 - Spine



# Características Técnicas:



**Estrutura:** Ferro com tratamento anticorrosivo de galvanização por imersão a quente de acordo com a norma EN ISO 1461;

**Superfície:** Chapa de ferro eletrozincada e lacada a esmalte tipo gel a 230°C, com espessura entre 50 a 70µm, de acordo com a norma UNE EN ISO 2808;

**Sistema de fixação:**

**Tipo B - Sistema de fixação** standard composto por base metálica aparafusada ao solo com buchas metálicas;

**Parafusos e acessórios**

**Parafusos:** Aço zincado ou opcionalmente aço inox AISI 304;



100% reciclável;

