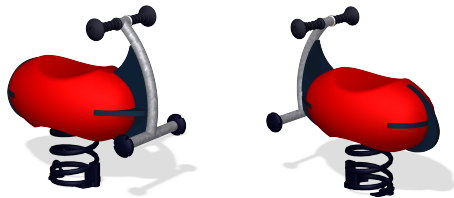


ELE400002

Racer



The Racer is a new development within spring riders. Because of the Racer's rounded and comfortable body, the child can lean from side to side as if racing around corners. Stable footrests and graspable handholds are supplied for this active play. Due to its abstract form, the Racer can take on any role in the play - racing on a horse, on a motorbike, or even a space scooter.

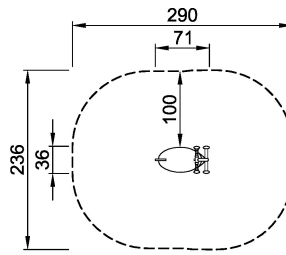
Product Line	Traditional Play
Category	Springers
Age group	2 - 6
Max. fall height (CM)	60
Total height (CM)	68
Safety Zone	5.9 m2



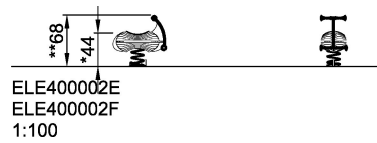
**SUR-
FACE**



ASTM



ELE400002E
*60cm
**68cm
***5.9m²
1:100



ELE400002E
ELE400002F
1:100

* = Highest designated play surface.
** = Total height of product.

Weight/heaviest parts	kg.	Installation (Manpower)	Persons
Concrete required	NaN m3	Installation (Hours)	Hours
Foundation amount/footing	NaN	Excavation	NaN m3