

Steering Wheels

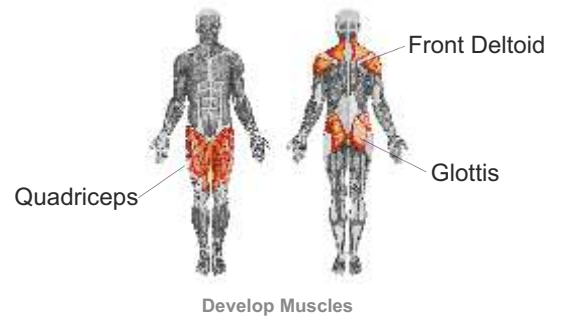
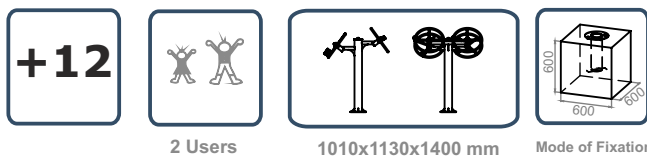
ref. G2702l



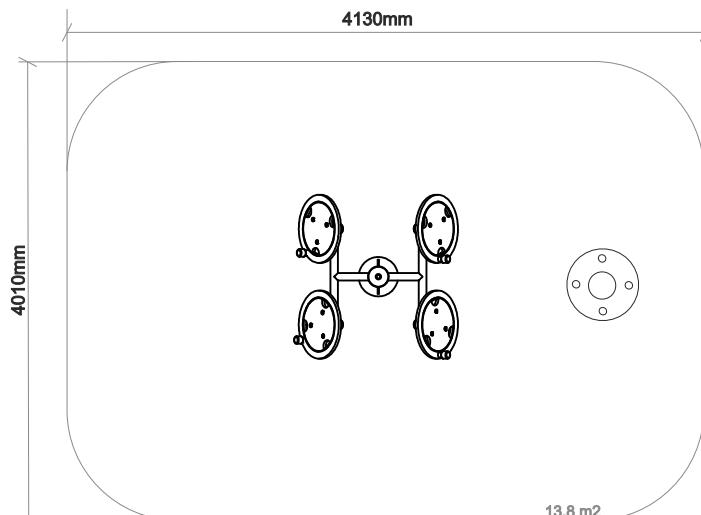
www.bragmaia.com



Data Sheet



Security Area:



Technical Characteristics:

Materials

Structure: Stainless Steel AISI 304;

Plastic parts: HDPE;

Ironmongery: Stainless Steel AISI 304;

Bearings: SKF rigid spheres with a shielded career on both sides (no need to maintenance and lubrication);

Finishing: Brushed;

Type of Fixation: by 1 negative provided;

Optional: Stainless Steel AISI 316;

Note: You must ensure that the equipment is correctly installed at the negative. Align the drilling equipment before drilling negative as illustrated by picture.

Maintenance

Every week: carry out a visual check on the general state of the element to make sure there are no breakages or damages to endanger users;

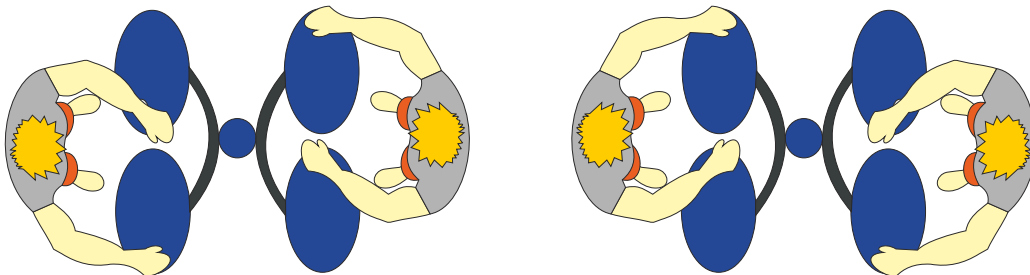
Every month: check that the joints move smoothly. Grease them if necessary. Ensure that the element is as structurally stable as when it was new. Check the state of all the screws, bolts and their protection;

Every year: check there is no corrosion on the metal legs. Check all ground fixings;

STEERING WHEELS



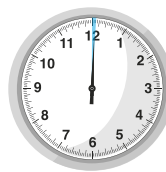
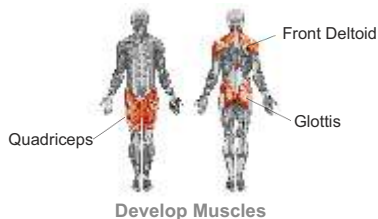
Ref.:
G27021



+12



2 Users



3 minutes



5 minutes

EXECUTION MODE: Bipedal posture, look forward with your chin in the normal position, spread your legs to the width of your shoulders, feet face forward and half-flexed legs. Grab the handles of the steering wheels with both hands (left hand with left bar and right hand with right bar) and turn the wheels.



Caution: Consult your doctor before performing these exercises. Children should be supervised by an adult.



Bragmaia: Zona Industrial das Cantarias, Rua Arq.º Viana Lima, lote 131, 5300-427 Bragança - Portugal