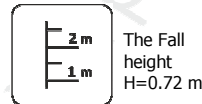
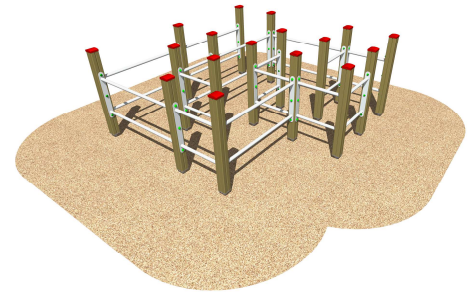
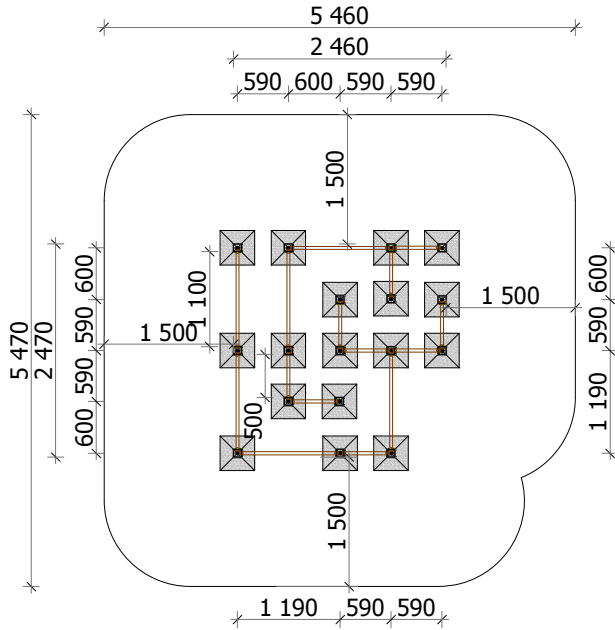


Construction are made from glued wood, galvanized steel.



Minimal required area - 28 m<sup>2</sup>

Length: 2 460 mm  
Width: 2 470 mm  
Height: 1 000 mm

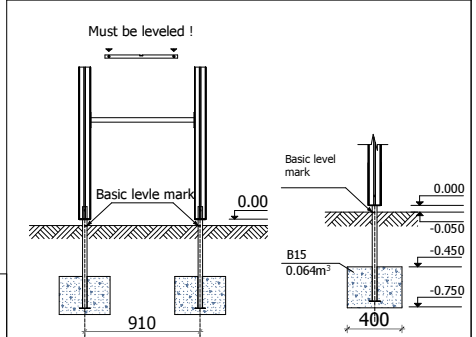
Playground are provided for outdoor use in supervising of adults

Length of safety area: 5 460 mm  
Width of safety area: 5 470 mm  
Required safety area: 28 m<sup>2</sup>

Equipment safety checkings must be performed once in a week in high vandalism risk areas.

Maintenance are required once in every 3 months, depending on usage

Play equipment are established with concreted steel foundation in equipment location. Equipment are suitable for use in two days after concreting, when the foundation are totally solid. During assembling there are not children allowed in area.



**Adequate temperature**

T<sub>min</sub> -33.2 °C  
T<sub>max</sub> +64.1 °C



**Snow load**

Small



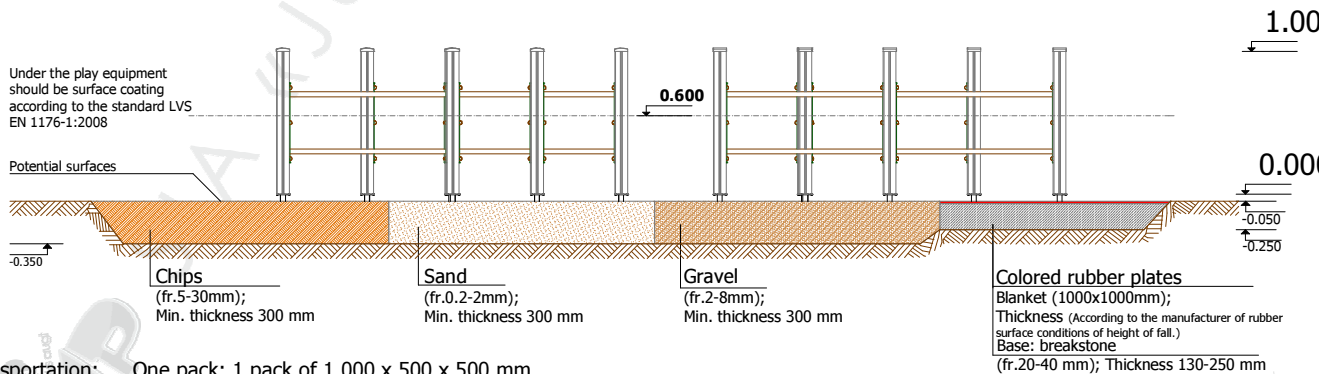
**Wing load**

Small



Under the play equipment should be surface coating according to the standard LVS EN 1176-1:2008

Potential surfaces



**Transportation:** One pack: 1 pack of 1 000 x 500 x 500 mm

**Spare parts:** All needed spare parts and elements, when warranty time expires can be ordered in „Jūrmalas Mežaparki” Ltd., and all the goods will be ready for delivery in 3 days.