

M171

# Bobcat springer



With the Bobcat springer you can join in with the work at the construction site and really move some dirt. Easy to enter and easy to leave again the Bobcat offers a ride in a safe position.

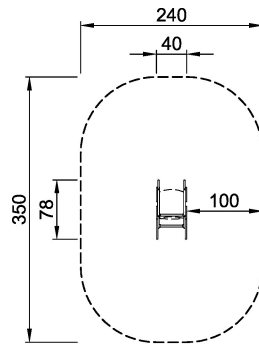
<b>Product Line</b>	Traditional Play
<b>Category</b>	Springers
<b>Age group</b>	2 - 6
<b>Max. fall height (CM)</b>	60
<b>Total height (CM)</b>	85
<b>Safety Zone</b>	7.5 m2



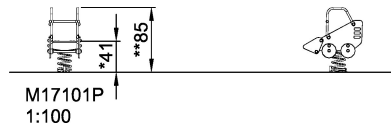
**SUR-  
FACE**



**ASTM**



M17101P  
\*60cm  
\*\*85cm  
\*\*\*7.5m<sup>2</sup>  
1:100



\* = Highest designated play surface.  
\*\* = Total height of product.

<b>Weight/heaviest parts</b>	kg.	<b>Installation (Manpower)</b>	Persons
<b>Concrete required</b>	NaN m <sup>3</sup>	<b>Installation (Hours)</b>	Hours
<b>Foundation amount/footing</b>	NaN	<b>Excavation</b>	NaN m <sup>3</sup>