

# Double Tower, Cognitive & Creative, ADA Stairs



This multiple two tower play structure has a bridge, taking the children from the one to the other side. The tower side is entered by an ADA staircase, wide enough to room an assistant and with good grips in the side panels and the floors. The transfer platform is wide enough to allow for a seat. From the tower, a seated, rotating slide movement down the curly climber, holding onto the pole in the middle for extra support, takes the child to ground level.

<b>Product Line</b>	Multi play structures
<b>Category</b>	MOMENTS™ Preschool
<b>Age group</b>	2 - 8
<b>Max. fall height (CM)</b>	204
<b>Total height (CM)</b>	279
<b>Safety Zone</b>	44.7 m2



SOCIALIZE



CLIMB



SLIDE



CONSTRUCT



DRAMATIC PLAY

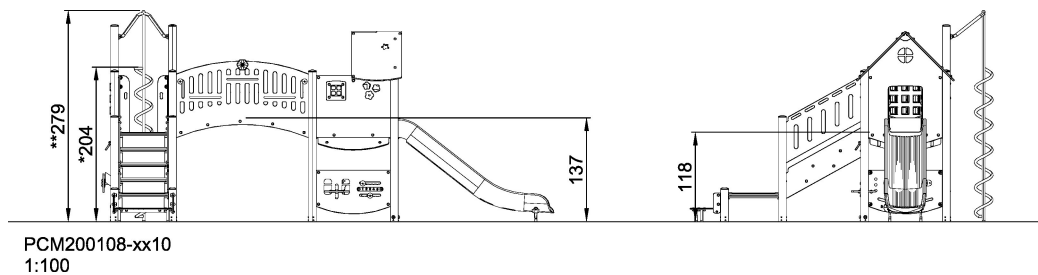
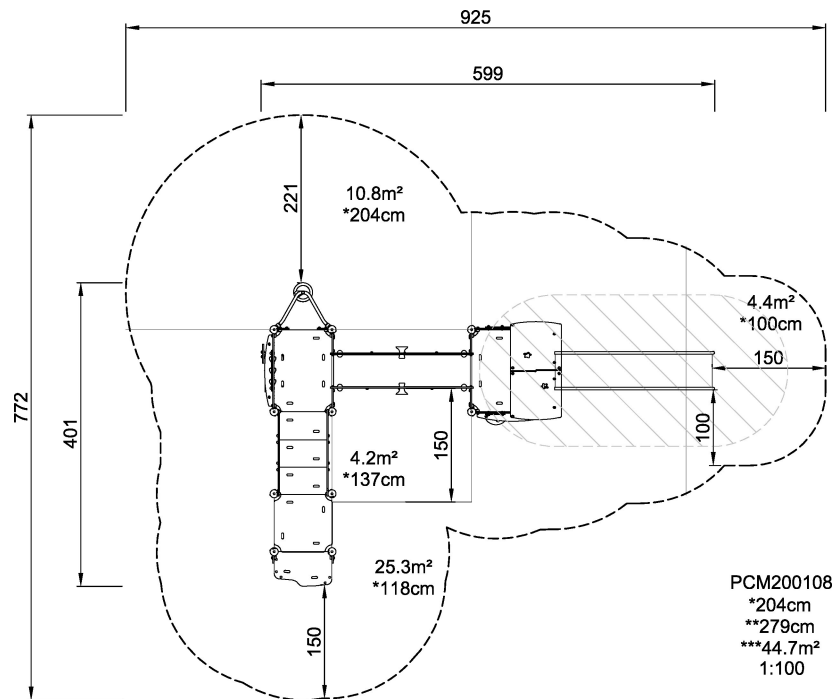


INCLUSIVE

SUR-  
FACE

ADA / INCLUSIVE

ASTM



\* = Highest designated play surface.  
\*\* = Total height of product.

<b>Weight/heaviest parts</b>	kg.	<b>Installation (Manpower)</b>	Persons
<b>Concrete required</b>	NaN m3	<b>Installation (Hours)</b>	Hours
<b>Foundation amount/footing</b>	NaN	<b>Excavation</b>	NaN m3