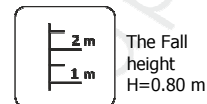
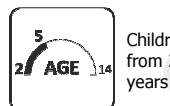
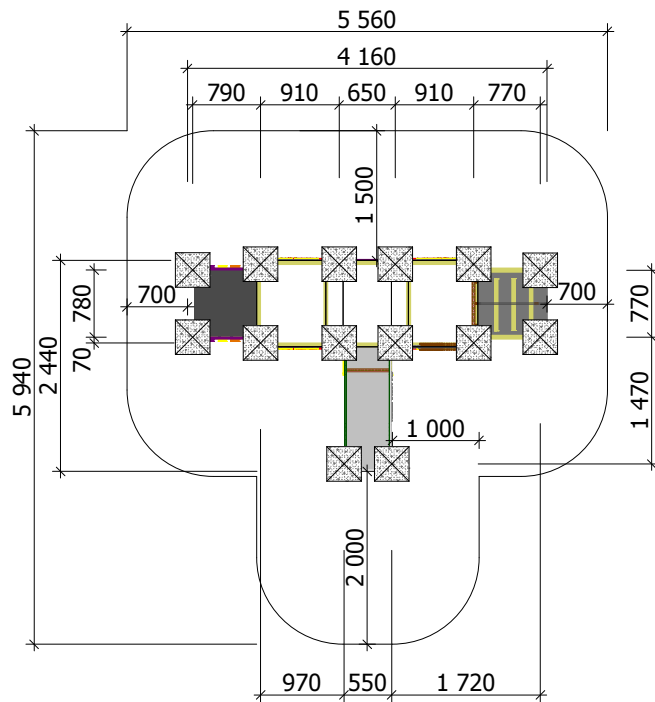


Construction are made from glued wood, galvanized steel and HDPE.



Minimal required area - 26 m²

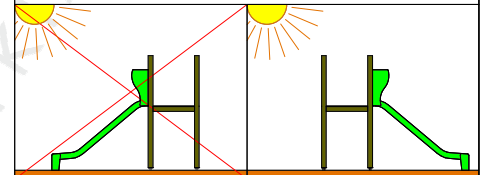
Length: 4 160 mm
Width: 2 440 mm
Height: 1 800 mm

Playground are provided for outdoor use in supervising of adults

Length of safety area: 5 560 mm
Width of safety area: 5 940 mm
Required safety area: 24 m²

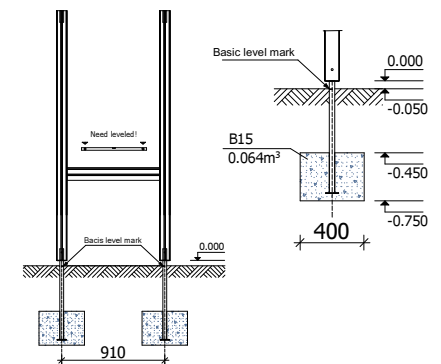


Do not place stainless steel slide directly to south!



Equipment safety checkings must be performed once in a week in high vandalism risk areas.

Maintenance are required once in every 3 months, depending on usage



Adequate temperature

T_{min} - 33.2 °C
T_{max} +70.1 °C



Snow load

1.22 kN/m²

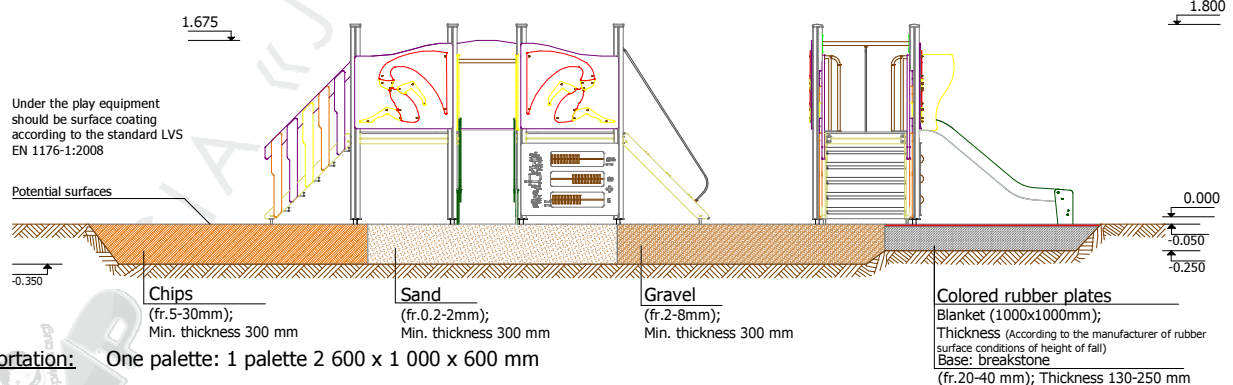


Wing load

Strength 753.3 N



Play equipment are established with concreted steel foundation in equipment location. Equipment are suitable for use in two days after concreting, when the foundation are totally solid. During assembling there are not children allowed in area.



Transportation: One palette: 1 palette 2 600 x 1 000 x 600 mm

Spare parts: All needed spare parts and elements, when warranty time expires can be ordered in „Jūrmalas Mežaparki” Ltd., and all the goods will be ready for delivery in 3 days.

According to LVS EN 1176:2008

Manufactured according to:

