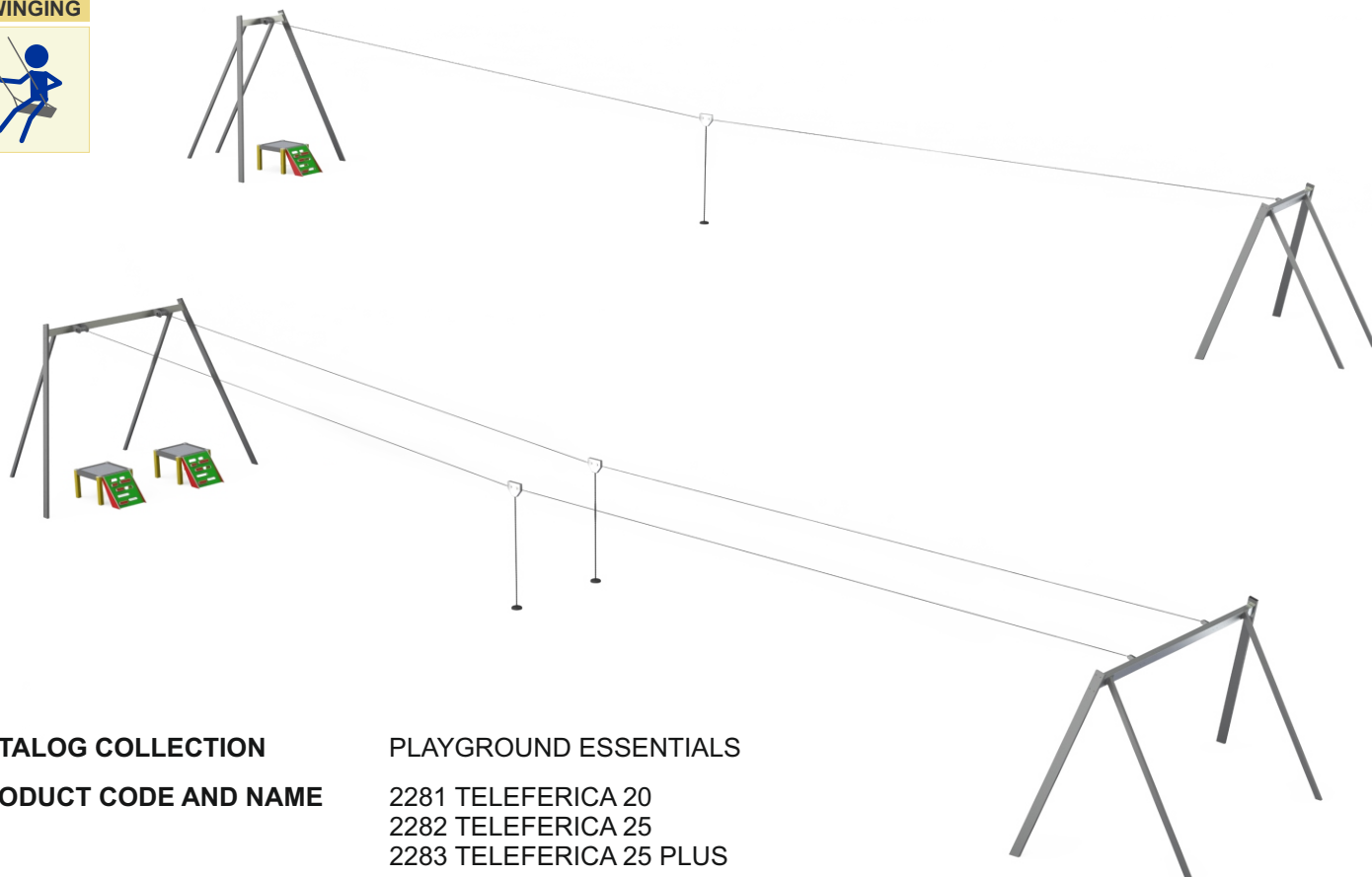


PRODUCT SHEET

art. 2281 / 2282 / 2283 TELEFERICA

SWINGING

CATALOG COLLECTION

PLAYGROUND ESSENTIALS

PRODUCT CODE AND NAME

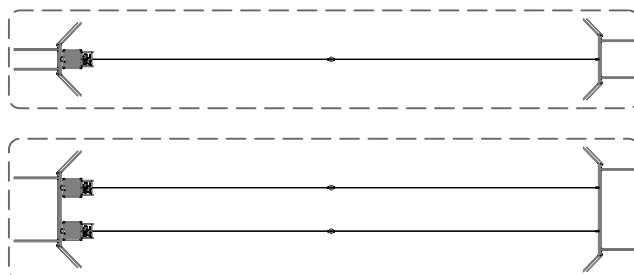
 2281 TELEFERICA 20
 2282 TELEFERICA 25
 2283 TELEFERICA 25 PLUS

SUGGESTED AGE OF USE

5-12 years

COMPOSITION

Main structure built up with powder coated metal tubulars 150x50mm with steel props 80x60mm.
 Aluminium treadplate sheet deck on a powder-coated metal frame with aluminum support poles and access ramp in HDPE slab.
 EPDM rubber seat with inner aluminium insert held by a galvanized chain. Connection joints in galvanized metal, sliding system, Ø10mm rope and bumpers.

SAFETY AREA

2281
2282
2283
DIMENSIONS
20mt
CABLEWAY

 L. 2400cm - W. 340cm - H 385cm
 SAFETY AREA: L. 2400cm P. 450cm

 SECURITY SURFACE:
MAX/MIN. 108,00 m²

 MAX CFH:
130cm
25mt
CABLEWAY

 L. 2900cm - W. 340cm - H 410cm
 SAFETY AREA: L. 2900cm P. 450cm

 SECURITY SURFACE:
MAX/MIN. 130,50 m²

 MAX CFH:
158cm
25mt
DOUBLE
CABLEWAY

 L. 2900cm - W. 580cm - H 410cm
 SAFETY AREA: L. 2900cm P. 650cm

 SECURITY SURFACE:
MAX/MIN. 188,50 m²

 MAX CFH:
180cm

- Make a proper security surface according to CFH.
- Periodic maintenance is mandatory, following manual supplied to customer.